

The Official **NAMM** Show Publication

# UpBeat

DAILY

## RIDE THE VIBE



**W**hat a difference a year makes. The mood of the industry has shifted dramatically for The 2012 NAMM Show. Exhibitors and attendees alike have told the *UpBeat Daily* staff that the vibe at this show has been over-the-top positive. Here's to keeping that energy flowing and making 2012 a business-building year. Until Summer NAMM, July 12–14, we leave you with just a bit of the star power that added to the good vibes in Anaheim.

**1)** Stevie Wonder was everywhere at The NAMM Show. The *UpBeat* crew caught him outside the Marriott. And, inset, Wonder tries out Kawai's latest pianos with the company's Hiroataka Kawai (left) and Brian Chung.

**2)** From left: Pete "Pops" Escovedo, Peter Michael Escovedo and Sheila E. perform at the Toca booth on Saturday.

**3)** From left: Steve Vai, Jeff "Skunk" Baxter and Orianthi perform during the TEC Awards Friday night. See page 4.

**4)** George Benson talks about his new Ibanez L GB300 hollow-body guitar during a press conference Saturday morning. See page 4.

**5)** Warwick artist Bootsy Collins (left) celebrates his new Space Bass with Warwick CEO and founder Hans Peter Wilfer, Marcus Spangler from the company's custom shop, and artist endorser Steve Bailey. See page 4.

**6)** Madonna's guitarist Monte Pittman demos his signature model at the Jarrell Guitars press conference Saturday morning.





# NEW PRODUCTS FROM ROLAND,<sup>®</sup> BOSS<sup>®</sup> & CAKEWALK-BOOTH #7400



**DISTRIBUTED EXCLUSIVELY BY ROLAND**

## All-New Fender<sup>®</sup> Powered by Roland Stratocaster<sup>®</sup> Guitars

### G-5 VG Stratocaster

Authentic Fender Stratocaster with Roland V-Guitar modeling onboard  
37 different modeled tones at the turn of a knob, including Fender Stratocaster, Telecaster<sup>®</sup>, humbucker, and acoustic, plus 12-string and instant alternate tunings



### GC-1 GK-Ready Stratocaster

Authentic Fender Stratocaster with integrated Roland GK Pickup  
Standard guitar output, plus 13-pin output for connecting directly to Roland GK devices, including the GR-55 Guitar Synthesizer and VG-99 V-Guitar System



worship  
summit ™

**SUNDAY JANUARY 22nd 9AM - 12PM**

**“WANNA PLAY?” STAGE OUTSIDE ARENA**

### JP-80 Synthesizer

Metamorphosis of a legend—Roland's flagship synthesizer, powered by SuperNATURAL sound & Behavior Modeling technology



### HP-507 SuperNATURAL<sup>®</sup> Piano

Elegant, upright-style piano with Ivory Feel keyboard and newly developed Acoustic Projection 3D sound system



**SuperNATURAL<sup>®</sup>**

### AT-900P Platinum Edition

The latest flagship Music Atelier<sup>®</sup> organ, with updated cabinet design, expanded voices, enhanced features, and new arranger engine



### TD-30KV V-Pro<sup>®</sup> Series

The ultimate V-Drums stage kit, with updated V-Pads<sup>™</sup> and V-Cymbals<sup>®</sup>, and all-new SuperNATURAL powered TD-30 Drum Sound Module





# Not Bad for a 110-Year-Old!

**Think about it.** How many 110-year-olds do you know that can still host successful industry events around the globe, fight for you on Capitol Hill, generate millions of media impressions and still manage to eat dinner at a normal time?

Then again, NAMM—which celebrates its 110th birthday last year—*isn't* your average industry association. NAMM constantly strives to achieve its mission of strengthening the music products industry promoting the pleasures and benefits of making music, and improving the ways in which it serves its Members—from presenting world-class trade shows and professional education opportunities to offering money-saving member services.

Find out more from NAMM's deceptively youthful Idea Center staff  
or visit [namm.org](http://namm.org).



For 110 years...

**NAMM**<sup>®</sup>  
believe in music

5790 Armada Drive • Carlsbad, CA 92008 • 760.438.8001 • [www.namm.org](http://www.namm.org)





## Sonnox, Fraunhofer IIS Team Up for New Plug-in

Sonnox and Fraunhofer IIS have collaborated to produce the new Sonnox Fraunhofer Pro-Codec plug-in. The plug-in makes it possible to audition codecs precisely in real time. This breaks away from the current time-consuming cycle of having to encode the mix to MP3/AAC, preview it, tweak it and then go back and re-render. The entire process is accomplished on the fly and frees the engineer to focus on producing a compensated, optimized mix.

The Pro-Codec plug-in enables mixing and mastering engineers to audition up to five codecs in real time within a DAW environment, produce an optimized mix and batch encode to multiple formats simultaneously. All major codecs, including MP3, MP3 Surround, AAC-LC and HE-AAC are supported, as are lossless codecs, such as MP3 HD and HD-AAC.

Sonnox has developed an FFT display to illustrate the input signal, output difference signal and a unique graphical indication of the audibility of codec-induced noise. Bit-stream integrity meters reveal potential decode overloads. Instant A-B auditioning enables engineers to switch between codecs without glitches. A blind listening mode augments codec comparisons. MSRP: \$499.

🛒 [Sonnox \(sonnoxplugins.com\)](http://Sonnox (sonnoxplugins.com))

## Taylor Guitars Celebrates Hawaiian Music

Taylor Guitars has released an all-koa tenor ukulele and full-sized matching Grand Symphony guitar. The acoustic coupling of finger players an exclusive tandem of instrumental voices that celebrate the musical heritage of the Hawaii.

The instruments are designed by Senior Luthier Andy Powers, who has designed ukuleles for the likes of Elvis Costello and Taylor Swift. With a limited production of 30 units, each ukulele was hand-built by Powers and features a body length of just over 12 inches and a scale length of 17.25 inches. With its small size, equally diminutive appointments were needed to complement the ukulele. The Taylor team took a page of inspiration from the redesigned Koa series and has included a plumeria flower/island vine fretboard and peghead inlay crafted from blackwood and maple and accented with a flame maple rosette.

The matching guitar in this Builder's Reserve special set is an all-koa cutaway Grand Symphony, which features identical appointments to its smaller counterpart but with one tone enhancement: solid lining and side braces instead of traditional kerfing on the interior of the guitar. The result is a guitar that's more responsive and dynamic.

🛒 [Taylor Guitars \(taylorguitars.com\)](http://Taylor Guitars (taylorguitars.com))

# George Benson Breezes Into NAMM

The NAMM Show got a serious shot of the cool on Saturday morning as George Benson appeared for an early morning press conference to support his new Ibanez L GB300 hollow-body guitar.

The L GB300 was launched at the show to celebrate more than 30 years of collaboration between Benson and Ibanez. The new model features a large body and wide neck profile and was built in Japan by Ibanez's most experienced luthiers.

Benson charmed the crowd of journalists by playing the new model. He joked about stealing licks from the likes of Johnny Smith while playing the song "Tenderly" and gave some members of the press a chance to try out the new model.

"Oh, Mr. Pat Metheny," Benson said to one volunteer. "Joe Pass lives," he said about another as he pointed out the speed the new neck offers.

"It took about a year and a half to come to fruition, but they did a beautiful job," he said. "I love this industry. I love all guitar players."



George Benson

I never met one guitar player who didn't find something good about their playing.

"Carry on people," he said as the event concluded. "Think about me. And purchase one of these to help the whole world play better on my guitar."



From left: Billy Sheehan, Russ Paul and Steve Vai at Friday's TEC Awards.

## Vai Receives Top TEC Award at NAMM

The sound engineers, editors, producers and other audio professionals behind Robert Plant's Band of Joy, Adele's *21* and Roger Waters' "The Wall Live Tour" were among the big winners at the 27th Annual Technical Excellence & Creativity Awards. The event, co-presented by the TEC Foundation for Excellence in Audio and NAMM, was held Friday evening at the Anaheim Hilton as part of The NAMM Show.

The Les Paul Award went to guitarist, composer and producer Steve Vai. Sponsored by the Les Paul Foundation, the award is given annually to a musician or recording professional whose work has epitomized the marriage of music and technology. The award was co-presented by Russ Paul and bassist Billy Sheehan.

The show was hosted by "Late Show" veteran Will Lee and featured performances by Lee, the 2 Cold ChiliBone TEC Band, Steve Vai, Billy Sheehan and Orianthi.

In the category of Technical Achievement, winners included Avid's Pro Tools 9 (Workstation Technology), Venue 2.9 (Sound Reinforcement Console) and Pro Tools | HD Native (Computer Audio Hardware); Solid

State Logic's AWS 948 (Large-Format Console) and Nucleus (Small-Format Console); Shure's Beta 181 (Microphone/Sound Reinforcement) and PGX digital wireless (Wireless Technology); Genelec's 1238CF (Studio Monitor); Meyer Sound Lab's MINA (Sound Reinforcement Loudspeaker); Radial Engineering's WR8 Workhorse (Signal Processing/Software); Moog's Slim Phatty synthesizer (Musical Instrument/Hardware) and Spectrasonics' Omnisphere v1.5 (Musical Instrument/Software). Winners in this year's new categories were Eventide's Space (Musical Instrument Amplification & Effects Technology) and Lab Gruppen's PLM 20000Q (Amplification Hardware/Studio & Sound Reinforcement).

Robert Plant's production crews won awards for both Record Production/Single with "Angel Dance" and Remote Production with NPR Music's "Robert Plant and Band of Joy, Live in Concert" radio broadcast. The award for Record Production/Album went to Adele's *21*. The Film Sound Production award went to the sound designers and editors behind "Inception."

🛒 [TEC Foundation \(tecfoundation.com\)](http://TEC Foundation (tecfoundation.com))

## Steinway to Sell Conn-Selmer

Steinway has reached an agreement in principle to sell its band division to an investor group led by Dana Messina, Steinway's former CEO, and John Stoner, Conn-Selmer president. Samick, owner of 33 percent of Steinway's common stock, will provide a portion of the financing and acquire equity interest in Conn-Selmer.

The parties expect to execute a definitive purchase and sale agreement, subject to committed financing, in the next 30–60 days. The definitive agreement will include a go-shop provision under which a committee of Steinway's board of directors will be permitted to solicit, receive, evaluate and enter into negotiations with alternative proposals for a 60-day period.

The committee will solicit alternative proposals during this period, according to a press release issued by Steinway. The release went on to say that "there can be no assurance that this process will result in a superior offer and there can be no assurance that the company will enter into a definitive agreement for any transaction or that any transaction will be completed."

🛒 [Steinway \(steinway.com\)](http://Steinway (steinway.com))



## Recording King Gets an Update

Recording King recently updated its Century Jubilee series slope shoulder guitars with an extended scale length and vintage styling.

The instruments' new features are designed to please both modern players and vintage enthusiasts. They've been extended to the full dreadnought scale of 25.4 inches for a little more punch and projection. The classic body shape still delivers the sweetness and ideal tonal blend characteristic of slope shoulder guitars, but the longer scale gives it a touch more volume to help cut through the mix. The 1 11/16-inch bone nut is comfortable for strumming, fingerstyle or flatpicking, and combined with the bone saddle, it helps to give these guitars an additional degree of brightness and clarity.

To celebrate the sonic upgrades, Recording King made some changes in the detailing with ivory body and fretboard binding, pearl fretboard dots, vintage-inspired Golden Age tuners, and the classic Recording King headstock logo inlay.

The slope shoulder guitars are available in two different styles to fit the needs of any player. Street price starts at \$499.99.

🛒 [Recording King \(recordingking.com\)](http://Recording King (recordingking.com))



# THE GOOD OLD DAYS

# ARE BACK



**FRAMUS VINTAGE 5/120**  
**BILLY LORENTO**  
**A.K.A "BILL LAWRENCE"**



**FRAMUS ARTIST SERIES**  
**EARL SLICK**



**FRAMUS 5/150 STARBASS**  
**BILL WYMAN**



the **NAMM** show<sup>®</sup>

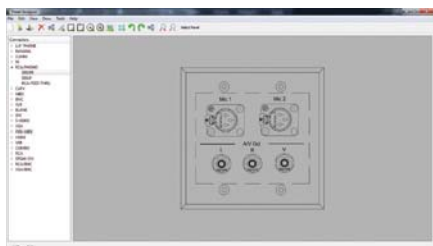
Visit us on Hall C # 4576

Family owned • Solar powered • Sustainably manufactured in a green environment  
 Distribution USA: U.S. Music Corp. • 444 East Courtyard St. • Mundelein • IL 60060 • Phone: 800 877 6863 • Fax: 847 949 8444 • E-Mail: Warwickusa@USMusicCorp.com  
 Distribution Canada: Korg Canada, a division of a Jam Industries • Phone: 514 457 2955 • Web: www.korgcanada.com  
 Artist Contact: Warwick Music Equipment Trading (NY USA) Inc. • 76-80 East 7th Street • New York • NY 10003 • Phone: 212 777 0990 • E-Mail: artist@framus.com  
 Headquarters: Warwick GmbH & Co. Music Equipment KG • Gewerbestraße 40 • 08256 Marktzeitzn • Germany • Phone: +49 337 422 555 0 • Fax: +49 337 422 555 0 9999 • E-Mail: info@warwick.de

**Framus**<sup>®</sup>  
 TRADEMARK  
 SINCE 1946

Visit us on the World Wide Web: [www.warwickbass.com](http://www.warwickbass.com) • join the WARWICK BASS FORUM: [www.warwick.de/forum](http://www.warwick.de/forum) • [www.framus.de](http://www.framus.de) • [www.framus.com](http://www.framus.com)





## Rapco-Horizon Features DesignVision

RapcoHorizon now offers DesignVision, a panel design program created specifically for the company's network of professional systems integrators, dealers and contractors. The software lets the RapcoHorizon network create quality custom installation diagrams for A/V installation projects.

Ideal for companies that specify audio and video in permanent installation projects, DesignVision features a simple interface that enables someone with no computer aided design (CAD) experience to create CAD-like setups of custom rack panels, wall plates and floor pocket inserts. The system speeds up the quoting process and can be downloaded to run locally on any Windows computer, which enables laptop users to access the software from anywhere, including on-site client meetings.

"With the fast-paced world we now live in, our systems integrators, dealers and contractors are always looking for the quickest and easiest way to make their clients happy," said Darius Seabaugh, vice president of marketing for RapcoHorizon. "The DesignVision software not only provides these professionals with the power of speed but it also ensures expert quality designs. All this, wrapped neatly in one easy-to-use, downloadable interface."

🛒 [RapcoHorizon \(rapcohorizon.com\)](http://RapcoHorizon.com)

## Voyage-Air Expands Distribution

Voyage-Air has teamed with Music Force Distribution to pipeline Voyage-Air folding travel guitars to the United Kingdom and Europe.

Music Force Distribution currently supplies more than 300 retailers.

"The Voyage-Air guitar is a unique product and answers an increasingly calling need for a compact transportable guitar," said Jon Gold of Music Force Distribution. "Yet all models are full-size, full-scale instruments that fold in half and fit into an ingenious custom backpack-style case. In my 22 years in this industry, I've never seen a breakthrough guitar product like this, and I'm thrilled to bring it to our established network of dealers."

3G International will also spearhead Voyage-Air distribution in Japan. 3G International has 30 years of industry experience.

"Japan is a unique market," said Takashi Hayakawa, 3G International's director. "Many travel by train or in small cars, yet the quality of tone is very important."

🛒 [Voyage-Air \(voyageairguitar.com\)](http://Voyage-Air.com)

## Meet the New NAMM Board Members



NAMM introduced eight new board members during the annual meeting of members Saturday. From left: Kevin Cranley, chairman; Tom Bedell, founder of Two Old Hippies; Jyotindra Parekh, president of Rice Music House; Keith Brawley, president of Gibson Guitars; Tim Carroll, vice president of worldwide audio programs, Avid Technology; Jon Haber, president of Alto Music; Crystal Morris, president of Gator Cases; Jeff Mozingo, president of Mozingo Music; Menzie Pittman, president of Contemporary Music Center and Joe Lamond, president and CEO of NAMM.

## Hohner Unveils New Gear

Hohner debuted a lineup of new products for 2012 at its booth on Friday afternoon. One product released was Lanikai's TunaUke System.

"TunaUke was developed to counteract the biggest problem with ukuleles, which is intonation," said Drew Lewis, Lanikai brand manager. "We have combatted that with a compensated nut and a moveable saddle system. The moveable saddle system allows for greater intonation at the 12th fret and deals specifically with string inconsistency."

TunaUke technology requires no tools for adjusting and allows for minute accuracy in adjustment.

Also new from Hohner is the Anacleto Collection, a line of accordions made by master accordion builder Anacleto Gabbanelli. Anacleto accordions are available in different keys and colors, including the three-switch, five-switch, nine-switch, two-tone, four-row diatonic and 48 bass piano models. They're handcrafted with handmade reeds and boast



Lanikai Brand Manager Drew Lewis debuts the TunaUke System.

a crystal design.

"The new accordions have a lot of bling," said Gilbert Reyes, accordion brand manager for Hohner. "They come in different tonalities and different color combinations."

Hohner also rolled out new products from Sonor, including The Mikkey Dee Signature snare and the reissue of the Phonic D 516 and D 515.

## Lowrey Fetes Dealers



Stan Beagley (right) from Piano Gallery in Murray, Utah, receives the Frederick C. Lowrey Award from Lowrey's Seijiro Imamura and Joanie Manero during Lowrey's annual dealer awards Friday night at the Marriott. "Lowrey dealers are the most valuable Lowrey asset," Imamura said during the banquet.



## Numark's New iDJ Pro Decks Out iPad

Numark's new iDJ Pro is a professional DJ controller that expands the user's iPad touch interface, integrating seamlessly with Algoriddim's djay for iPad app to form a completely new DJ experience. iDJ Pro features a brushed aluminum casing and is equipped with all the professional controls users expect, plus some design features and capabilities that will inspire brand-new surges of creativity.

The iDJ Pro puts a 30-pin dock for iPad at the center of its dual-platter setup, giving users access to an iPad's touchscreen alongside an expanded layout of physical controls that include touch-sensitive platters; large die-cast aluminum volume knobs; a dedicated music-library scroll knob; and hot cues, looping, pitch and effect controls.

The unit is fully integrated with Algoriddim's djay for iPad app and can work with other Core MIDI-enabled apps. It's also AirPlay compatible, giving users the flexibility to blast their sets wirelessly through AirPlay speakers. iDJ Pro comes ready to party with professional microphone and external device inputs, as well as balanced XLR master outputs.

🛒 [Numark \(numark.com\)](http://Numark.com)



## Musicsoft Rides the Wave

Waves Audio has joined forces with Musicsoft Arts to introduce the Mashup iPad app. Featuring an advanced playback engine and effects controlled by an intuitive interface, Mashup lets users play and mix directly from an iPad music library and download exclusive tracks from leading DJs, such as Junior Sanchez and Kris Menace. Mashup is a complete mobile DJ booth, with studio-quality EQ and analog-style resonant filters, Vinyl Touch glitch-free scratching, and independent time-stretch and pitch-shift for each of its two stereo decks, saving users thousands of dollars in gear.

The MaxxAudio enhancement for Mashup includes MaxxVolume all-in-one dynamics control, which increases the output levels of headphones and external speakers.

Features include dual stereo decks with studio-quality EQ and effects; independent time-stretch and pitch-shift for each deck; analog-style resonant high-pass and low-pass filters with exclusive touch ribbon control; free downloadable music; and vinyl-touch, glitch-free scratching.

🛒 [Waves \(waves.com\)](http://Waves.com)



# PW

## SOUND SYSTEMS

Audio Solutions for the Modern Musician

**Powerwerks™**

**PW50**  
**mi** BEST PRODUCT

3015 Kustom Drive, Hebron, KY USA 41048 1-800-999-5558 [www.powerwerks.com](http://www.powerwerks.com)

Copyright © 2012 Powerwerks | A Division of Hanser Music



## The Loar's Small Body, Big Sound

The Loar has launched the LO-215 and 216, two small-body single-O guitars with a 25.4-inch dreadnought scale length for extra projection.


The LO-215 and 216 are flat top instruments that give players the feel of a small-body instrument but still benefit from the extra volume of a longer scale.

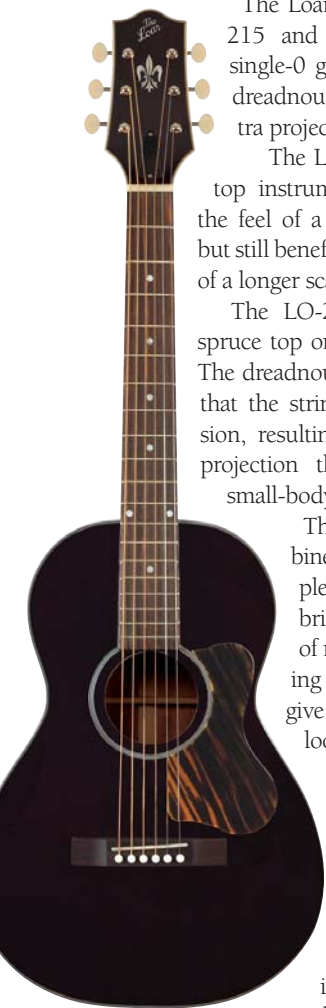
The LO-215 has a solid Sitka spruce top on a classic O-style body. The dreadnought scale length means that the strings have greater excursion, resulting in more punch and projection than expected from a small-body guitar.

The Sitka spruce combines with the flamed maple back and sides for a bright tone fit for any style of music. Ivory body binding and bound headstock give the LO-215 a classic look.

The LO-216 is built with the same features, but with mahogany back and sides for players who prefer a slightly darker tone. This model is finished in either natural or classic black for a historic look

that's different enough to stand out from the crowd.

 [The Loar \(theloar.com\)](http://theloar.com)



## Aviom Launches SK6 Stage Kit

Aviom, the exclusive developer of audio transport protocol A-Net, has launched the SK6 Stage Kit for the AllFrame Multi-Modular I/O.

In addition, the company has released an updated POA80 Power Over A-Net Power Supply Assembly for F6 Modular I/O Frames.

The SK6 Stage Kit provides an enclosure for the AllFrame to be used as a stage box in live applications.

The AllFrame Multi-Modular I/O System brings the flexibility of the company's Pro64 audio network to the wall box, stage box or floor pocket.

For installations and road applications, the AllFrame Multi-Modular I/O system eliminates several expensive and labor-intensive stages of the signal chain, while reducing cable clutter and enhancing flexibility.

 [Aviom \(Aviom.com\)](http://aviom.com)



Warwick artist Bootsy Collins (left) celebrates his new Space Bass with Warwick CEO and founder Hans Peter Wilfer (middle) and Marcus Spangler from Warwick quality management and R&D.

## Warwick Unveils Bootsy's Space Bass

Warwick has created a custom bass for endorser Bootsy Collins. The eye-catching, illuminated Space Bass was introduced in the Warwick booth on Friday.

No one outside of the company, including Collins, had seen the bass prior to its world premiere on the NAMM show floor.

"Words just can't explain how I'm feeling right now," Collins said. "You dream dreams, but you never dream it would happen like this. I'm blown away. I can't wait to play it onstage."

The Space Bass is illuminated with LED lights, and it has a distinctive shape designed in close collaboration with Collins.

"We've worked on this for one and a half years," said Marcus Spangler, head of

Warwick's custom shop. "Bootsy came up with the idea of a spaceship from 2030. We made a lot of drawings, and we finally came up with this bass. It has a maple neck with a swamp ash body and ebony fretboard. It has 180 LED lights powered by 10 batteries."

Deborah Malave, vice president of Warwick USA, said, "You want somebody out there actively playing your bass that people can see." Malave explained that the company creates customized basses for musicians of all levels, and that if a player can dream it, then Warwick can build it.

Joining Collins at the unveiling of the Space Bass were Warwick founder and CEO Hans Peter Wilfer and artist endorsers Steve Bailey, Norwood Fisher and Lee Sklar.

## PRS Showcases Signature Models

Paul Reed Smith Guitars rolled out a versatile series of new signature axes and updates to its SE, Core and Private Stock lines on Friday. Dave Navarro and Neal Schon were among the artists whose Private Stock models were released in 2012. Specifications on the SE Dave Navarro include a beveled maple top, a 24-fret maple wide thin neck, rosewood fingerboard and mahogany back.

Other artists, such as Cody Kilby, Michael Ault and Brent Mason, were on hand to introduce the new PRS offerings. Kilby demonstrated his new Private Stock signature model, a 16-inch Tonare Grand with Angelus depth that offers hybrid bracing, hand-machined tuners, a carbon truss rod and exclusive inlays. PRS also updated several of its existing models, such as the SE Orianthi and Paul Allender models.

Plus, the company debuted its P22 solid-body ax with enhanced piezo system. Partnering with LR Baggs, PRS produced a model that features the same circuitry as its hollow-body models and a bridge with uncovered



Paul Reed Smith (right) hands Neal Schon his new signature hollow-body on Friday.

53/10 humbucking treble and bass pickups that exudes warm, versatile tones.

At a fraction of the cost of PRS's Custom 24 models, the SE Custom 24 line has a maple top equipped with SE HFS and SE Vintage Bass humbucking pickups for full, rich tones. It also boasts a 25-inch scale with a 24-fret wide thin neck, mahogany back, maple neck with rosewood fretboard and nickel-plated hardware for a classic Custom 24 feel.

## Martin Brings Mayer Model

Martin Guitars recently developed the 00-45SC John Mayer Edition — limited to just 25 instruments.


"There's something about a smaller-bodied acoustic guitar that has always appealed to me," Mayer said. "In one glance, it inspires me to write, travel, perform and age along with it. The 00-45SC John Mayer Edition is my vision of the ultimate 00-45 come to life. It's simply perfect."

"There is no better ambassador for our custom guitars than John Mayer," said Chris Martin, chairman and CEO of Martin. "We are thrilled to have the opportunity to collaborate with such a singular talent on such a unique instrument."

The back, sides and headplate are constructed of cocobolo wood. The soundboard is book-matched from Martin's Adirondack spruce.

Style 45 vintage appointments are executed in blue paua shell with snowflake fingerboard position markers.

Each instrument is personally signed by Mayer and numbered.

 [C.F. Martin & Co. \(martinguitar.com\)](http://C.F.Martin&Co.com)



## Big Anniversary for Native Instruments


Native Instruments North America is celebrating its 10th anniversary. The festivities are symbolized by a large-scale billboard on Sunset Boulevard, right outside the new Native Instruments offices in the heart of Hollywood. The American branch of the company recently relocated to new offices that offer three times the size and now include the company's own R&D facilities.

Founded in Berlin in 1996, Native Instruments opened its first U.S. office on Hollywood Boulevard in 2002.

The anniversary was celebrated with an invite-only club party at L.A.'s Dim Mak Studios on Saturday, featuring a star-studded lineup with top acts, such as DJ Craze, Tommy Lee & DJ Aero, Tim Exile, DJ Shiftee, DJ Skribble and other forward-thinking DJs and performers associated with the company's products. Guests from all around the world received a red-carpet reception and stunning LED walls curated by top artists using both DJing and performance tools by Native Instruments.

For 2012, Native Instruments looks toward continued growth in its U.S. market share and to make even more use of local U.S. talent for its product design and development projects. The company also plans to expand its worldwide staff.

Within the last year alone, Native Instruments nearly doubled its revenue in the U.S. with such products as the Traktor Kontrol S4 DJ controller, according to company officials.

 [Native Instruments \(native-instruments.com\)](http://NativeInstruments.com)





**YOUR  
GUITAR  
DESERVES  
THE BEST**

**PICKUPS  
CABLES  
STRINGS  
STANDS  
TUNERS  
CASES  
PICKS  
& MORE**

**COME SEE US IN BOOTH #5420  
AND 3RD FLOOR ROOM 304A**

*Fender*  
MAKE HISTORY™





Jim Marshall

## Marshall Celebrates 50 Years of Amp Making

It's a landmark year for Marshall Amplification. The globally respected British company is celebrating its 50th anniversary in 2012.

"To be honest, when Dudley Craven, RIP, Ken Bran and myself teamed up with the idea of building the world's first rock 'n' roll amplifier in the autumn of 1962, we would have been delighted if we could have made and sold 50 of them," said the firm's founder and namesake, Jim Marshall. "We had no idea if the company would last 50 days, let alone still be going strong 50 years later."

The reason Marshall decided to build that now legendary first Marshall was simple: He listened to the tonal wishes of the up-and-coming rock guitarists who frequented his small music shop on the outskirts of London. He understood their wants and reacted accordingly.

"They told me what they were looking for from a guitar amplifier," he said. "Because there was nothing available at the time that quite did exactly what they wanted, I decided to put together a team that could build an amp that could recreate the sound I could hear in my head based on what the lads' described to me."

And thus a legend in the guitar amplification world was born.

## iConnectivity Delivers New Muse

The iConnectMUSE by iConnectivity is a palm-sized personal mini-mixer that combines several music accessories into one iOS-controlled product, ideal for gigs at home or on the road.

With iConnectMUSE, the user experiences high-quality audio processing, improved audio latency, the ability to share and mix audio through an iOS device, and even charge the iOS device at the same time.

Featuring six stereo inputs and six stereo outputs, each with its own unique mix, this ultra-compact device may be small in size but huge on functionality and features. It's designed for student musicians exploring personal composition techniques, professional musicians composing in a hotel room or on tour, or performing musicians who need consistency moving from gig to gig.

MSRP: \$229.99.

**iConnectivity (iconnectivity.com)**



American Music & Sound's Pablo Mastodon holds up the Nord C2D combo organ while Nord National Sales Manager Mike Papa speaks at the company's booth Friday.

## AM&S Touts High-tech Gear From Top Brands

American Music & Sound previewed a long list of new high-tech products from its many brands Friday.

Allen & Heath added an 80-channel digital mixing console, the GLD-80, to its iLive series. "We saw a large gap in the market for the next price point down, aimed at church market, school market, those regional contractors," said Michael Palmer, national sales manager of Allen & Heath products. "Essentially, we married all of the heritage of the GL series analog product we've been making for the last 20-some years with our digital backbone we've been successful with in the past few years."

Allen & Heath filled another gap in the market with its Zed-16FX and Zed-18 rack-mount mixing consoles featuring Doper high-gain pre-amps, four-band musiQ British EQ, four aux sends and 100-mm pro taper faders.

Big news came from Nord in the form of the C2D, a two-manual combo organ with real drawbars; the Nord Piano 2 HA 88 with 128 MB of additional RAM; and the Nord Drum virtual analog drum synthesizer with four high-sensitivity inputs that accept everything from common drum pads and

triggers to sequencers and microphones.

"The most requested thing we've had on the extremely successful C2 organ was real drawbars," said Mike Papa, national sales manager for Nord. "The original C2 used like a lightbar, and the C2D is the hardware version of that. It's essentially the same sound engine, but we improved the Leslie a bit and added percussion click."

Other notable new products at the American Music & Sound booth included Turbosound's two-piece TMS-2 loudspeaker system, Studiologic's NumaCompact digital piano and Sledge virtual analog synthesizer, Vestax's VCI-400 tabletop DJ MIDI controller, Xone's DB2 DJ mixer and XD253 headphones, Beyerdynamic's DT 770 Pro 32-ohm headphones and M 88 Limited Anniversary Edition microphone in original chrome finish, Fostex's AR-4i audio recorder for iPhone and DC-R302 three-channel mixer/two-channel flash recorder for DSLR cameras, Alpine hearing protection earplugs with two levels of attenuation, Sonomax custom-fitted earphones, and Focusrite's Automap 4 MIDI controller software and Twitch DJ controller.

**American Music & Sound (americanmusicandsound.com)**

## International Gathering



The International Coalition for the Promotion of Music Making gathered Wednesday. Made up of opinion leaders and heads of MI and pro audio associations from around the world, the 40 delegates heard presentations on the Thai and Russian MI markets and discussed Lacey Act implementation and sustainable material issues. Discussions at the annual International Coalition Meeting often inspire cooperation across borders for programs designed to create more music makers globally.

## Prolok Pads Gig Bags

Prolok offers six series of soft gig bags for guitar and two series for keyboard.

Identifiable by their bold trim colors in stylish designs, Prolok bags feature a variety of padding thicknesses and a vast assortment of pockets for Ipods, headphones and accessories.

On the Jupiter series, an accessory compartment unzips to become a convenient backpack.

MSRP: \$39.95, \$99.

**Prolok (prolok-usa.com)**



## Vigier Excalibur Gets an Upgrade

Vigier has improved its Excalibur Surfreter by upgrading the fretboard material to a specially designed alloy called "imetal."

This new chrome-colored metal is harder than the previous Delta Metal, giving the guitar even more sustain. It's also more resistant to wear, doesn't tarnish and boasts a long-lasting shine.

**Vigier (vigierguitars.com)**

## Aphex Rolls Out Two New Pre-amps

Aphex recently added the EX.BB 500 and the HeadPod4 to its mix of pre-amp audio products.

The EX.BB 500 adds the sonic depth of the Big Bottom, with its dynamic low-frequency punch, improved detail and much-exalted thickness. This compact 500 series product delivers all of the critical performance demanded, while fitting racks from API, Radial, A Designs, Empirical Labs and Tonelux.

The HeadPod4 is simple to operate with four individual volume controls for each channel's discrete and powerful Aphex amplifier. The HeadPod4 provides both digital and analog inputs and high-quality analog-to-digital conversion and sound monitoring.

There's no unplugging and replugging, as the HeadPod4 lets users leave all the inputs right in place and dial in exactly what each one needs.

**Aphex (aphex.com)**



**NEW!**  
SENNHEISER  
XS WIRELESS



# INTRODUCING XS WIRELESS

## YOUR ENTRY INTO THE WIRELESS WORLD

Rugged, reliable and easy to use, XS Wireless delivers renowned Sennheiser sound for small to medium-sized venues, conference rooms or houses of worship. With true diversity reception, 960 available frequencies and a convenient mute button, XS Wireless provides up to 10 hours of worry-free operation.



The system is quick and easy to set up due to its frequency management and synchronization via remote channel. Professional True Diversity technology ensures optimum reception, anytime and anywhere. Learn more today at:

[www.SennheiserUSA.com/XSwireless](http://www.SennheiserUSA.com/XSwireless)

 **SENNHEISER**



# Orange OV4 Adjusts Tubes

Orange Amplification released its new DIVO tube adjusting technology during a Friday morning press conference.

DIVO automatically adjusts the bias of the output power tubes to ensure their full potential is realized. It monitors the amp's performance and will isolate faulty tube failures by running them at half-power until the tubes can be changed.

The technology is at the heart of the DIVO Orange Tube Sync OV4, a complete stand-alone unit that can be used with Orange amps or other brands.

"This is really cool because this allows you to mix and match tubes without having to take your amp out to a tech," said clinician Doug Doppler of the OV4. "If I've got my blues gig on Monday night, I put in all my 6V6s, and the clean side of the amp responds to that really well. Then you move over to the dirty channel for some classic rock, and you put in four KT88s. Then you move toward the heavy stuff, and you put in one 6V6, one KT88 and a pair of EL 34s to keep it tight on the bottom end."

Orange also introduced the Micro Terror, a micro amp that has a single 12AX7 pre-amp tube with 20 watts RMS of solid-state output. It's powered via a 15-volt DC supplier, features an auxiliary input for MP3 player or CD, and can be plugged into any cabinet with 4 ohm or greater handling (even a 4 x 12).

And for something a bit larger and more powerful, the company reintroduced the OR50H, its 40th anniversary amplifier — first introduced in 2008.

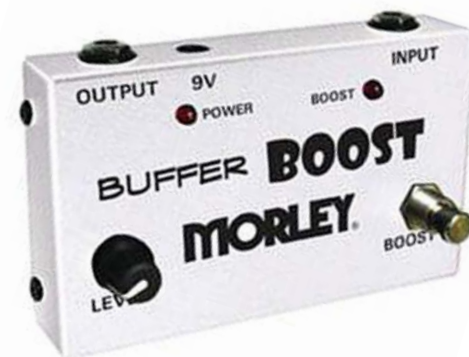


Orange clinician Doug Doppler shows off the DIVO Orange Tube Sync OV4 on Friday morning.

"A great single-channel guitar amp is something you connect with as a guitar player," Doppler said. "This place is filled with brilliant amplifiers that have taken multiple channels to kind of create the experience

that really, ideally, as a guitar player you would like to have in a one-channel amplifier. This gives me a chance to plug into the OR50 here."

🛒 [Orange \(orangeusa.com\)](http://orangeusa.com)



## Morley Provides Buffer Boost

Morley has launched the Buffer Boost, which is a combination buffer circuit and clean boost pedal.

The buffer circuit maintains guitar tone and overall signal strength even when using it with effects that typically load down your signal.

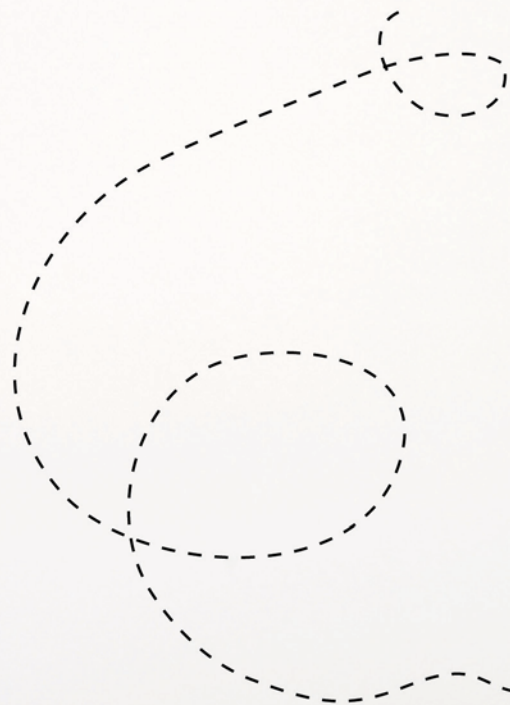
It's the culmination of years of buffer circuit design used in Morley pedals, such as the Steve Vai Bad Horsie Wah, the Mark Tremonti Wah and the George Lynch Dragon 2 Wah.

The Buffer Boost is also a handy clean boost pedal. A footswitch lets users turn the boost on and off as needed, and a level knob offers up to 20 dB of boost. Dual LEDs show that the pedal power is on when the boost is engaged.

MSRP: \$119.

🛒 [Morley \(morleypedals.com\)](http://morleypedals.com)

## Find out what the *buzz* is all about.



Booth 4258

**FISHMAN**®



# Power Up



## More Power is Good Power

When it comes to amplifiers, you can never have too much power. Packing four 1500-Watt amplifiers into the space of one, the all-new NU4-6000 delivers 6000 Watts in one endlessly customizable power amplifier.

Revolutionary Class-D technology combined with ultra-efficient switch-mode power supplies provide the punch. Built-in "zero-attack" limiters, back to front ventilation and independent power, low frequency and thermal overload protection for each channel safeguard your system.

With massive output and all the amenities, iNUKE NU4-6000 brings serious power and versatility to drive your sound system effortlessly and reliably for many years to come.

Get powered up at Booth 6766.

To learn more, go to [behringer.com/iNuke](http://behringer.com/iNuke).

[behringer.com](http://behringer.com)





# WARWICK...It's



DIN 14001  
DIN 16001



From left: Ralphe Armstrong • P-Nut • Jonas Hellborg • TM Stevens

• Verdine White • Bootsy Collins • Larry Graham • Divinity Roxx • SteveBailey • Jäckl Reznicek • Rob Trujillo • Lee Sklar • Mike Inez



# a Family Affair!



Family owned • Solar powered • Sustainably manufactured in a green environment

Distribution USA: Us Music Corp. • 444 East Courtland St. • Mundelein • IL 60060 • Phone 800 877 8663 • Fax 847 648 8444 • E-Mail [Warwick.info@USMusicCorp.com](mailto:Warwick.info@USMusicCorp.com)  
Distribution Canada: Korg Canada, a division of a Jam Industries • Phone 514 457 2555 • Web: [www.korgcanada.com](http://www.korgcanada.com)  
Artist Contact: Warwick Music Equipment Trading (NY USA) Inc. • 70-80 East 7th Street • New York • NY 10003 • Phone 212 777 8990 • E-Mail: [artist@franusa.com](mailto:artist@franusa.com)  
Headquarters: Warwick GmbH & Co. Music Equipment KG • Gewerbeplatz 40 • 09250 Markneukirchen/Germany • E-Mail: [info@warwick.de](mailto:info@warwick.de)  
Branches: Shanghai / P.R. China • Dübendorf / Switzerland • Praha / Czech & Slovakia Republic • Warsaw / Poland • Hainham / Great Britain  
Visit us on the World Wide Web: [www.warwickbass.com](http://www.warwickbass.com) • Join the WARWICK BASS FORUM: [www.warwickderforum.com](http://www.warwickderforum.com)

**Warwick**  
Bases, Amps & Rock 'n' Roll.




## Korg Humidi-Beat Humidifies While Keeping Time

Korg's new Humidi-Beat metronome with humidity/temperature detector offers a personal metronome and instrument care assistant for nearly every musician. Acoustic instruments of all types can be affected by changes in temperature and humidity. The Humidi-Beat can monitor these elements, so adverse conditions can be avoided. A clock function is also included.

Available in both black and white, the compact Humidi-Beat features an easy-to-read LCD screen. The volume can be set to loud or soft or muted for visual-only use. There are 13 rhythm patterns, and the measure length can be set from zero to nine beats. The tempo can be set in pendulum steps like a traditional metronome, or in full steps. The tempo can also be set using the tap tempo buttons.

The Humidi-Beat is equipped with a clock, a thermometer and a relative humidity detector that can monitor the environment where the instrument is being played, in addition to monitoring conditions inside the instrument's case. MSRP: \$59.99.

 [Korg \(korg.com\)](http://Korg.com)



## Fender Upgrades, Adds Acoustics

Fender has introduced multiple new models for 2012. Several existing models have received significant upgraded features. The new instruments include a limited-edition, U.S.-made model from Fender's Custom Shop and three signature models honoring today's artists.


Limited to 150 instruments, the U.S.A. Select Kingman C dreadnought offers a depth of resonant tone and elegant design distinguished by a Custom Shop Fiesta Red gloss finish, aged white body binding and vintage-style appointments. Features include a solid Engelmann spruce top with forward-shifting scalloped x-bracing and solid mahogany back and sides; vintage C-shaped maple neck with rolled edges, dual-action truss rod and Stratocaster headstock shape; and a 9-inch radius rosewood fingerboard with bone nut and 20 frets.

The California series includes the Sonoran SCE Thinline and Redondo CE. The Sonoran SCE Thinline features a sleek, tight

dreadnought body 3 inches deep for easy playing and a Fishman Isys pickup system with on-board tuner. Other features include a solid spruce top with scalloped x-bracing for richly resonant tone, mahogany back and sides, three-ply gold pickguard, C-shaped bolt-on maple Stratocaster neck, 20-fret rosewood fingerboard with bone nut, and a Fender Viking rosewood bridge.


New in the artist signature models are the Alkaline Trio Malibu, the Duane Peters Sonoran SCE and the Robert Schmidt Electric Signature mandolin. The Alkaline Trio Malibu takes a classic 1960s-era Malibu folk-style acoustic and adds a heart-shaped rosette designed by the band.

The Robert Schmidt Electric Signature mandolin is designed by Flogging Molly's mandolin player, Robert Schmidt, and is Fender's first signature mandolin. It boasts a dark walnut stain spruce top and carved maple back and sides.

 [Fender \(fender.com\)](http://Fender.com)

## Free Training in Recording, Live Sound Technologies

The H.O.T. (Hands-On Training) Zone on Level 2 of the Anaheim Convention Center presents a fun, interactive final day of free educational sessions that include "DJ Ops Conference," "Live Mixing With Professionals," "Stick 'n' Skins — the Sessions" and "The Wrecking Crew Reunion/Screening." See a list of today's H.O.T. Zone sessions at [namm.org/thenammshow](http://namm.org/thenammshow), or check the 2012 NAMM Show smart-phone app, available for download at your phone's app store.

 [NAMM \(namm.org\)](http://NAMM.com)

## Cordoba Takes Guilele to the Next Level

Featuring a soft cutaway and an on-board pickup, Cordoba's Guilele CE advances the company's new Guilele a step further. The six-string ukulele-sized guitar unites the tuning and playability of a guitar with the portability and convenience of a ukulele.

The Guilele CE provides easy access to the upper frets, making the instrument equally as capable as a full-sized guitar. Making no compromises on tone or convenience, it's designed to be a vibrant travel companion.

 [Cordoba \(cordobaguitars.com\)](http://Cordoba.com)

**VISIT US AT**  
**NAMM 2012**  
**SUITE 208B**  
all the others just got booths ...

We celebrate the world-premiere of our two best-in-class tube mics, the **LCT 840** and the **LCT 940**.

Join our endorsers in Suite 208B, meet true product specialists and get a first hand impression of how Austrian-designed recording and studio microphones sound in their natural habitat. On stage. At the

**LEWITT**  
**LOUNGE**

Live 4 times a day, 4 days long.  
Unaltered. Authentic. Memorable.



# Steinberg Interfaces With UR28M, UR824

Steinberg has introduced the beginning of its new range of audio interfaces with USB 2.0 connectivity: the rackmountable UR824 interface and the desktop UR28M interface.

With the UR interfaces, Steinberg offers two professional solutions for musicians and producers. Both interfaces provide sufficient means of connectivity, D-Pre microphone pre-amps, plus DSP-powered reverb and channel-strip effects for monitoring at zero latency.

The UR824 features eight Neutrik combo inputs, eight TRS outputs and two pairs of ADAT I/O doubling as S/PDIF that add up to 24 channels, plus Word clock I/O with JetPLL ultra-low jitter support. The UR28M offers two Neutrik combo inputs, two TRS



inputs, six TRS outputs and S/PDIF I/O. The two-track input is an additional option for monitoring reference sources.

The UR824 features eight D-Pre microphone pre-amps, while the UR28M comes with two D-Pres. Each Class-A discrete microphone pre-amp utilizes an advanced Inverted Darlington circuit design and boasts a -26 dB pad selector and 48-volt phantom power. Another highlight is the dsp-MixFx technology powered by Yamaha's

custom-designed SSP2 DSP chip. This offers latency-free monitoring together with the REV-X reverb and the Sweet Spot Morphing channel strip to users of any DAW software. The included dspMixFx DSP mixer handles all aspects of routing and monitor mixing in one easy-to-navigate interface.

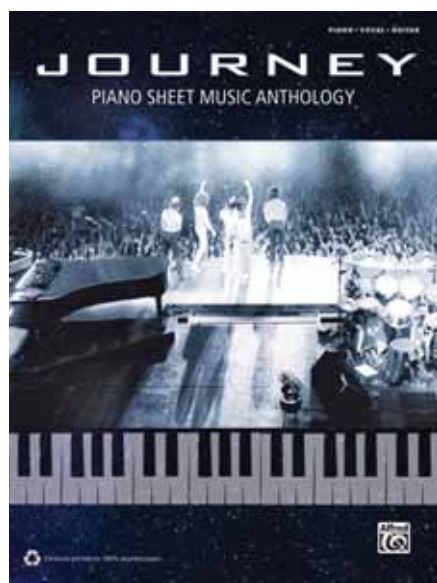
The REV-X featured in the UR824 and UR28M is a complex reverb algorithm developed by Yamaha. Known for its sound quality, the REV-X features three types of reverb effects: hall, room and plate simulations with reverb time and level control.

The Sweet Spot Morphing channel strip consists of a sidechain-enabled compressor and a three-band parametric equalizer, which can be applied to up to eight mono

input channels or four stereo input channels on the UR824 and four mono input channels or two stereo input channels on the UR28M.

By including Cubase AI 6, a dedicated version of Steinberg's Cubase music production system, both UR interfaces provide a full system solution for recording music in studio quality. Supporting up to 48 MIDI tracks, 16 instrument tracks, 32 audio tracks and 16 physical inputs at 96-kHz and 24-bit resolution, Cubase AI 6 comes with the HALion Sonic SE VST instrument and 26 quality audio effect processors. Other features include score editing, real-time pitch shifting and time stretching plus ReWire support. MSRP: UR28M, \$499.99; UR824, \$999.99.

🛒 [Steinberg \(steinberg.net\)](http://Steinberg.steinberg.net)



## Alfred Arranges Journey Music for the Piano

Alfred recently released *Journey: Piano Sheet Music Anthology*, a comprehensive sheet music collection for the rock band with more than 150 pages, arranged for piano, vocal and guitar. The songbook contains 28 arrangements drawn from nearly 35 years of the band's repertoire, including "Any Way You Want It," "Don't Stop Believin'," "Lights" and "Open Arms." MSRP: \$24.99

🛒 [Alfred \(alfred.com\)](http://Alfred(alfred.com))

## Mike Mangini Tours With Zildjian Artist Drumstick

Zildjian drumstick artist Mike Mangini has added another line to his resume: drummer for progressive rock band Dream Theater. Mangini is currently on tour with his artist model drumstick.

Resin-impregnated laminated birch provides extra density and heft to the stick. The enhanced power and control provided by the material is well-suited for the extreme drumming required for the Dream Theater live shows.

Mangini's drumming can also be heard on Dream Theater's new recording, *A Dramatic Turn of Events*.

🛒 [Zildjian \(zildjian.com\)](http://Zildjian(zildjian.com))



## WE'VE BUILT OUR BUSINESS ON OUR BRANDS. SO CAN YOU.

 Acoustic Guitars	 Violin Family	 Ukuleles
 Mandolins	 Gypsy Jazz Guitars	 Banjos
 Resophonic Guitars	 Banjos & Mandolins	 Electric Guitars

There are many reasons why so many music stores have taken on multiple Saga product lines. It starts with solid Saga brand value achieved through painstaking design, product development and quality assurance. For 35 years, Saga has been committed to music retailers with the highest quality product line offerings based on traditional American design and style. Visit us at the NAMM Show or go to [sagamusic.com](http://sagamusic.com) to get acquainted with instruments to increase your store's profitability. Saga, make us your source.

Visit us at booth 5760

Saga Musical Instruments • (650) 588-5558 • [www.sagamusic.com](http://www.sagamusic.com) • Connect with us on • Dealer inquiries invited





## Gator Adds to Commander Series Bags

Gator has added to its Commander series with a new 335 model designed to fit most Gibson ES-335 and similar-style semi-hollow-bodied electric guitars.

Gator's Commander series features a dual textured, weather-resistant exterior and polyethylene-reinforced interior shield, providing heavy-duty protection in a lightweight, easy-to-carry bag. It's equipped with an army of storage compartments and pockets to hold a laptop, mobile recording devices, hard drives, cables and more. The ultra-foam-quilted interior features an adjustable neck support system to transport an instrument safely and securely. Hideaway padded backpack straps and a reinforced firm grip side handle make transport easy.

🛒 **Gator Cases** ([gatorcases.com](http://gatorcases.com))

## Gibraltar Unveils New Rack Quick T-Leg Clamp

The Rack Quick T-Leg clamp adds a speedy option to Gibraltar's line of hardware offerings.

This new quick T-leg clamp reduces the time it takes to attach a T-leg rack section to a vertical post. Two separate hinged clamps are used to expedite the attachment process. One clamp works on the T-leg itself and is mounted at an angle, so it's easy to tighten with a drum key. The vertical tube section slides easily into the tube and tightens with a big T handle.

The unit's also available as mini and standard T-leg packages in black or chrome.

MSRP: \$45-\$76.

🛒 **Gibraltar** ([gibraltarhardware.com](http://gibraltarhardware.com))



## Jammin Pro Connects With USB Nylon 202

Jammin Pro recently added the USB Nylon 202 to its guitar line.

The USB Nylon 202 has all the features users want in a classical and electro-acoustic guitar, but it also has a 2.0 USB connection to hook up to a computer for direct recording. The instrument comes packaged with Magix Music Maker LE to transform a computer into a recording studio.

The USB Nylon 202 is easy to use and simple to connect.

🛒 **Jammin Pro** ([jamminpro.net](http://jamminpro.net))

## Roland Organs Go Platinum

Roland has released the AT-900 Platinum Edition (AT-900P) organ, the most recent addition to the company's Music Atelier family. The AT-900P is housed in a handcrafted cabinet with a walnut finish. Fundamental organ voices are refined with the latest music expression technology to fuse with rich, classic organ tones. Derived from the VK series combo organs, Roland's

Virtual Tone Wheel organ sound offers authentic vintage organ tones and rotary characteristics, while additional SuperNATURAL sounds provide realism in all music genres. The AT-900P is home to Roland's newest arranger technology, with new music styles, enhanced main rhythm grooves, V-Drums and orchestral voicing.

🛒 **Roland** ([rolandconnect.com](http://rolandconnect.com))

LOSSLESS POWER DRUM PEDAL

Hall D Booth #2554

 **SAKAE**  
[www.sakaedrums.com](http://www.sakaedrums.com)



## ART Tube MP/C Pre-amplifies, Compresses

Applied Research and Technology has introduced the Tube MP/C, a tube pre-amp and optical compressor. It's a multipurpose tool for audio engineering and recording. Enclosed in a tabletop chassis are two independent circuits featuring a tube-based analog pre-amplifier and a VCA-less compressor with optical gain reduction control.

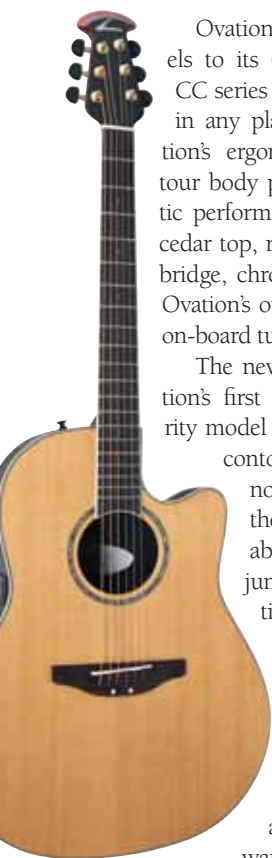
Used as a mic/line pre-amp or as a DI box, the Tube MP/C is designed to work with any recording, sound reinforcement or electronic instrument setup. ART's Tube MP/C circuitry is a hybrid design, using solid-state and tube technology.

The Tube MP/C maintains signal integrity and low noise. A tube-based opto-compressor circuit follows the tube pre-amp. While the pre-amp is always active, the compressor may be bypassed. The pre-amplifier's active, balanced solid-state input provides low noise and ideal CMRR. The 1/4-inch input has a high impedance, and a transformer isolated XLR output makes it possible to use both the XLR and 1/4-inch outputs at once. The compression circuit features a VCA-less design and utilizes optical electronics coupled with a 12AX7a vacuum tube gain stage. The compressor is soft knee by design.

MSRP: \$129.

🛒 [ART \(artproaudio.com\)](http://artproaudio.com)

## Ovation Adds to Celebrity CC Series



Ovation has added two new models to its Celebrity CC series. The CC series CC29S-4C offers comfort in any playing position, and Ovation's ergonomically designed contour body provides improved acoustic performance and features a solid cedar top, rosewood fingerboard and bridge, chrome hardware, as well as Ovation's own OP4BT pre-amp with on-board tuner. MSRP: \$599.

The new CC49S-VA marks Ovation's first multi-sound hole Celebrity model to offer the benefits of its contour body. Improved ergonomic bowl shaping gives the guitar a more comfortable feel and provides a jumbo guitar-sized acoustic response with the feel of a smaller-bodied instrument. The CC49S-VA also features a solid spruce top finished in a vintage amber stain, rosewood fingerboard and bridge, chrome hardware, and Ovation's own OP4BT pre-amp with on-board tuner. MSRP \$599.50.

🛒 [Ovation \(ovationguitars.com\)](http://ovationguitars.com)

## Line 6 Offers Flagship Pod HD Pro

Line 6 is showing the Pod HD Pro rack-mountable multi-effect processor, which comes loaded with an arsenal of 22 HD guitar amp models and 22 HD guitar pre-amp-only models, ideal for driving a tube amp's power section.

HD models are a leap forward in modeling quality, giving digital signal processing all the feel, dynamics and playability that makes guitarists passionate about great tube amps. Detailed amplifier behavior, including single-ended class A tube stages, class AB push/pull interactions and power supply behavior, are emulated with nuance. The result is ideal warmth, feel, sustain and articulation.

More than 100 M-class effects — descended from Line 6 pedals, such as the DL4 delay modeler and the M13, M9 and M5



stompbox modelers, as well as eight new mic models and 16 new cab models — also come stock for a variety of modern, vintage and boutique-inspired tones.

An extensive digital and analog I/O makes Pod HD Pro flexible, powerful and ready for any studio or stage application. The

AES/EBU out doubles as the L6 LINK jack, which, when connected to a Line 6 DT-series tube amplifier, creates a boutique amp factory capable of producing a virtually unlimited variety of tones with boutique warmth and feel.

🛒 [Line 6 \(line6.com\)](http://line6.com)

# Defining the sound of Bluegrass music...then and now!

## The new Kentucky KM-5000 Bill Monroe Centennial Master Model Mandolin

**"Bill Monroe's approach to the mandolin was unique, utilizing it as both a lead and rhythm instrument. He is directly responsible for the mandolin's current prominence in Bluegrass, Country, Pop and numerous other forms of music."**

*George Gruhn, Nashville, TN*

In honor of the musical legacy left by the man forever to be known as the *Father of Bluegrass Music*, Saga Musical Instruments presents the new KM-5000 Bill Monroe Centennial Master Model Mandolin! Limited to 100 pieces—each constructed to the same standard of quality found in the most sought-after of vintage instruments, and is a fitting tribute to a legend that will inspire any player or collector.

**KM-5000 Features:**

- Hand-carved and graduated Adirondack spruce & maple from Northern Michigan
- Skillfully shaded traditional sunburst spirit varnish finish
- Grained ivoroid body binding with side purfling
- Commemorative pearl peghead inlay and signature of Bill Monroe
- Triple gold-plated hardware with hand-engraved tailpiece cover
- Accompanied by a signed Certificate of Authenticity

**On display at booth 5760**

Saga Musical Instruments • South San Francisco, CA 94080 • [www.sagamusic.com](http://www.sagamusic.com) • Connect with us on





## Korg Offers Rainbow of Color for Tuners

Korg is now offering its Pitchclip and AW-2G clip-on guitar and bass tuners in eight limited-edition colors: violet, indigo, blue, green, yellow, orange, red and pink.

Compact and easy-to-use, Pitchclip is the low-profile addition to Korg's clip-on tuner

family. Its high-contrast LED display can be angled up to 120 degrees and inverted, assuring clear visibility when mounted in front of or behind the headstock. Simple and user-friendly, the Pitchclip provides fast processing, accuracy within  $\pm 1$  cent, a detection range from A0 to C8 and high visibility. A single CR2032 Battery provides a generous 17 hours of use, while the auto power-off function preserves the battery life.

The AW-2G clips on to any guitar's headstock and provides accurate tuning information without getting in the way. Relying on either piezo-electric vibrations or the built-in microphone, the AW-2G is reliable in any musical environment. The LCD display is backlit and reversible, assuring supreme visibility in any environment. The unique double ball-joint mounting provides maximum versatility.

🛒 [Korg \(korg.com\)](http://Korg.com)

## KTS Unleashes the Tone in Small Parts

KTS Musical Products has refined Titanium to a higher level of purity to create new tone-resonant guitar and bass components.

KTS Titanium upgrades offer users richer highs and mids, as well as meatier lows. The notes will seem to jump off the fretboard as users play with enhanced note definition, longer sustain, more stable string vibration and less string breakage.

🛒 [KTS Musical Products \(apintl.com\)](http://KTS Musical Products (apintl.com))



## Daisy Rock Brings Back Multiple Models

Daisy Rock Girl Guitars has reintroduced electric, acoustic and bass models back into its lineup of female-friendly guitars. These new models include the Stardust Elite Venus electric guitar in Vintage Ivory Pearl finish; the Rock Candy Classic electric guitar in Atomic Pink finish; the Rock Candy bass in Diamond Sparkle finish; the Debutante Junior Miss Short Scale acoustic in Bubble Gum Pink, Popsicle Purple and Cotton Candy Blue finishes; and the original flagship Pepper Mint Pink Daisy electric guitar.

Daisy Rock's Stardust Elite Venus guitar sports a classic Vintage Ivory Pearl finish, crème binding with an abalone inlay and a Vines & Flowers fingerboard inlay. The guitar features set-neck construction for increased sustain and stability, mahogany body with a pearloid top, and Daisy Rock's trademark Slim & Narrow neck. High-output humbuckers are controlled by a three-way selector switch, and feature a push-pull tone control that taps the humbuckers to add single-coil sounds for sonic versatility. The Venus also comes equipped with top-of-the-line features usually reserved for guitars that cost twice as much. These include Grover tuning machines and a

fully adjustable tune-o-matic bridge with string-thru body for maximum sustain, accurate intonation and rock solid tuning.

The Rock Candy Classic guitar features a lightweight contoured sycamore body that's designed to fit the female form. Top-of-the-line quality components include Duncan Designed humbuckers and a fully adjustable tune-o-matic bridge with stop bar tailpiece.

The Rock Candy bass includes EMG Select pickups with active EQ, master volume, 12 dB bass cut/boost, 12 dB treble cut/boost and a pickup blender pot for sonic versatility. Plus, the Rock Candy bass features Grover tuners for rock solid tuning.

The Debutante Junior Miss acoustic is a quality 3/4-size, short-scale guitar that's ideal for the beginning guitarist. Debutante by Daisy Rock is a guitar line made exclusively for girl beginner guitarists, and they offer many of the same features seen in the Daisy Rock line, such as the trademark Slim & Narrow neck, lightweight bodies and eye-catching colors that are ideal for younger girls.

MSRP: \$139-\$559.

🛒 [Daisy Rock \(daisyrock.com\)](http://Daisy Rock (daisyrock.com))

# AWESOME!

# #6946

**BULLET™**  
**GUITAR JACK**  
**TIGHTENER**

*Patented Grip - Tip™ holds Jack while tightening, preventing damage to wiring and solder joints!*



Works With Most Recessed and Surface Mounted Jacks, Effects Pedals & Mixers Metric & S.A.E. Nuts Engineered Plastic

*"We can tighten loose nuts, but we can't do anything about your drummer"*

BIGROCK ENGINEERING MFG. USA PAT. PEND. © 2010

**ALLPARTS**

(713) 466-6414  
[www.allparts.com/bullet](http://www.allparts.com/bullet)

PLEASE VISIT US AT  
NAMM BOOTH #5882

**FZONE**  
**Colorful Tuners Family**



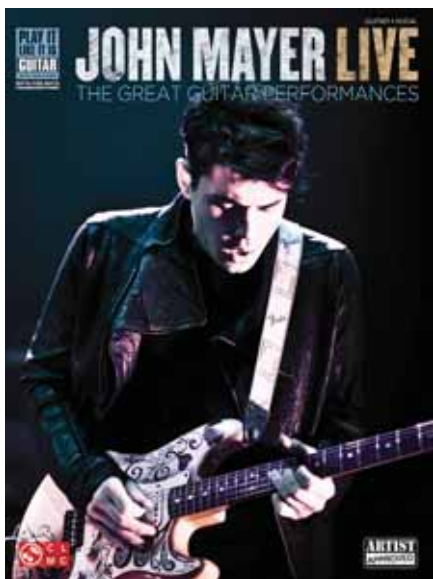
**Q5**  
1. Tuning mode: Chromatic  
2. A4 Calibration: 410-490Hz  
3. Flat: b-bb-bbb-bbbb

**FT-8000C**  
1. Tuning mode: chromatic, Guitar, Bass;  
2. A4 Calibration: 430-450Hz

Q3 FT-119 FT-009C FT-001 FC-B1 Capo FT-1000

Namm Show Booth: 1436E [www.fzonetechnology.com](http://www.fzonetechnology.com)





## Cherry Lane Examines Mayer's Guitar Skills

Cherry Lane has published two books that focus on John Mayer's guitar prowess. *John Mayer — Legendary Licks* and *John Mayer Live: The Great Guitar Performances* are guides that analyze his work.

*John Mayer — Legendary Licks* examines Mayer's signature guitar parts and solos. Author Toby Wine presents the parts in short sections for easy comprehension. This book/CD pack explains Mayer's approaches to soloing, rhythm parts and songwriting. It explores numerous songs, including "Back To You," "Blues Intro," "City Love," "Come Back To Bed," "Come When I Call," "Covered In Rain," "Good Love Is On The Way" and "Gravity."

*John Mayer Live: The Great Guitar Performances* is a new addition to Cherry Lane's Play-It-Like-It-Is Guitar series. It's a collection of 14 tracks, which are featured on three of Mayer's live albums. The songbook has note-for-note guitar transcriptions with tablature for such songs as "Belief," "Come When I Call," "Comfortable," "Every Day I Have The Blues," "Gravity," "Man On The Side," "Neon" and "Vultures."

**Cherry Lane** ([halleonard.com](http://halleonard.com))

## Vic Firth's Titanic Stick Design

Vic Firth's new Titan series of drumsticks have been designed with a technology to maximize their durability and playability.

Made from an advanced aerospace-grade carbon fiber composite, each stick is very consistent in weight and pitch, while providing resilience.

All of this is accomplished without sacrificing the feel and sound produced by a wood stick.

This new series features the designs of the American Classic 5A and 5B.

MSRP: \$99.95.

**Vic Firth** ([vicfirth.com](http://vicfirth.com))



## Takamine Adds to G-Series

Takamine has added the EG240DLX, EG536SHB and EG430SC-WR to its G-series guitar line. Designed and built under the supervision of Takamine's head luthiers, G-series guitars are created to serve all players from the hobbyist to the professional.

The new EG240DLX features a hand-selected bearclaw spruce top, highly figured mahogany back and sides, and Takamine pickup and pre-amp system.

The EG536SHB is a herringbone dreadnought featuring a high-grade Sitka spruce soundboard that creates a powerful and dynamic voice with a broad tonal range. Rosewood back and sides allow for maximum projection, and an included Takamine pickup and pre-amp system ensures every



performance scenario is covered.

The EG430SC-WR NEX small jumbo body guitar is designed for broad dynamic range and tonal balance. The solid cedar top responds well to a light touch for fingerstyle

passages yet still sings with authority when strummed vigorously. The back and sides are a figured maple that's highlighted by the high gloss finish in a rich wine red color.

**Takamine** ([takamine.com](http://takamine.com))

**DENIS WICK**  
LONDON  
BOOTH 3112

THE NEW DENIS WICK  
**AMERICAN CLASSIC**  
TRUMPET MOUTHPIECES

the **SIZES** you want  
the **CONSISTENCY** you need

CLASSIC

**DANSR** | 888-707-4455  
[www.dansr.com](http://www.dansr.com)





## Hal Leonard Adds to 101 Tips Series

Hal Leonard recently added to the 101 Tips series with *101 Harmonica Tips* and *101 Trumpet Tips*.

The 101 Tips titles provide a wide range of helpful information on everything from maintenance to playing. These book/CD packs present how-to insight via text, photos, music, diagrams and an accompanying CD. *101 Harmonica Tips* by Steve Cohen covers techniques, position playing, soloing, accompaniment, the blues and equipment. *101 Trumpet Tips* by Scott Barnard spans genres from classical to rock and everything in between. Topics include non-classical playing and gig tips.

MSRP: \$14.99.

🛒 Hal Leonard ([halleonard.com](http://halleonard.com))

## Genelec 8020B Monitor an Eco-friendly Choice

Genelec has released the 8020B bi-amplified active monitoring system, offering improved features with an emphasis placed on environmental care. The compact system (measuring 9.53 by 5.94 by 5.59 inches) has been designed for monitoring work in difficult listening environments, particularly those with a lack of space. The 8020B, despite its space-saving size, incorporates Genelec's acoustic design innovations to minimize all forms of distortion in all listening environments.

The 8020B features a mains power switch located on the enclosure's rear panel. The rotary front panel control is used for sound level adjustment only. The audio signal can still be muted (the front LED stays on) in turning the front panel volume knob fully counterclockwise, but actual mains power is only switched off using the rear panel on/off power switch, which turns the front LED on/off. This also enables turning the power off without changing the set level, as in all of Genelec's other products. Along with this change, the second rear-mounted XLR connector has been removed. This new control configuration offers new options for environmentally conscious users and those looking to cut down on energy consumption.

The 8020B's die-cast aluminum Minimum Diffraction Enclosure features relatively large internal volumes; visually pleasing, softly curved edges; and mechanical strength. The 8020B's advanced Directivity Control Waveguide technology provides a smooth on- and off-axis response. The long, curved reflex port ends in a wide flare



for ideal bass articulation. As a result, the 8020B offers imaging accuracy and low-frequency extension.

The 8020B features a 4-inch bass driver along with a 0.75-inch tweeter loaded into a new advanced Genelec Directivity Waveguide. The free field frequency response is 66 Hz–20 kHz. The system is capable of delivering sound pressure levels of up to 105 dB maximum peak acoustic output per pair at a distance of 39.37 inches.

MSRP: \$595.

🛒 Genelec ([genelecusa.com](http://genelecusa.com))

## New NAMM Board of Directors Elected

NAMM's voting members recently elected a new slate of nominees to the association's board of directors at its annual meeting of members.

The eight new directors joining the NAMM board from 2012–2015 include:

Tom Bedell, founder of Two Old Hippies, a manufacturer and supplier of lifestyle brands featuring Breedlove and Bedell acoustic guitars and Peace, Love & Rock 'n' Roll apparel and gifts; Keith Brawley, president of Gibson Guitars for North America; Tim Carroll, vice president of worldwide audio programs for Avid Technology and a member of the SupportMusic Coalition; Jonathan Haber, president of Middletown, N.Y.-based Alto Music and member of the Alliance of Independent Music Merchants advisory board; Crystal Morris, president and co-founder of Gator Cases and a member of the Young Presidents Organization, NASMD and the Percussive Arts Society; Jeff Mozingo, president of Mozingo Music in O'Fallon, Mo.; Jyotindra Parekh, president of Columbia, S.C.-based Rice Music House; and Menzie Pittman, president and director of education at Contemporary Music Center in Haymarket, Va.

📄 [NAMM \(namm.org\)](http://namm.org)

# The Realist™ Violin

A Truly Acoustic Amplified Violin

"The finest sound quality for any style."  
-Gregor Huebner  
Tango Five, Sirius String Quartet

"I really don't know how I lived without it."  
-Anna Bulbrook  
Airborne Toxic Event

"Responsive, natural. I love hearing the blend of electric and acoustic violin in the sound system and under my ear."  
— Ann Marie Calhoun  
SuperHeavy

**NAMM Booth 3500 & 3505**

## Lighter Stiffer Faster

### Genuine Beryllium for Maximum Value

ODM Applications and Direct Replacement

Get your Tuning Fork Tech Brief Here

**Truextent**  
ADVANCED ACOUSTIC TECHNOLOGY

[www.truextent.com](http://www.truextent.com)  
+1 510.661.9755  
[truextent@materion.com](mailto:truextent@materion.com)



# The New Warwick Amps - NOW AVAILABLE!

## Can you afford not to have them?

- WA 300 amp w / sleeve, 300 Watt
- WCA 810, 1200 Watts (or 2 x 600 W)
- WA 600 amp w / sleeve, 600 Watt
- WCA 115 cab, 300 Watt
- WCA 410 Cab, 400 Watt
- BC 20 Combo, 20 Watt/Horn
- BC 40 Combo, 20 Watt/Horn
- BC 80 Combo, 80 Watt/Horn
- BC 150 Combo, 100 Watt/Horn
- BC 300 Combo, 150 Watt/Horn
- WCA 210, 300 Watts

**NEW at NAMM**

**BASS PLAYER EDITOR AWARD**



**NEW at NAMM**

the **NAMM show**<sup>®</sup>



WCA 210  
Visit Booth C # 4576

Family owned • Solar powered • Sustainably manufactured in a green environment



Distribution USA: [www.warwickusa.com](http://www.warwickusa.com)  
 Distribution Canada: [www.warwickcanada.com](http://www.warwickcanada.com)  
 Artist Contact: [info@warwick.com](mailto:info@warwick.com)  
 Headquarters: [www.warwick.com](http://www.warwick.com)  
 Branches: [www.warwick.com](http://www.warwick.com)  
 Visit us on the World Wide Web: [www.warwickbass.com](http://www.warwickbass.com) join the WARWICK BASS FORUM: [www.warwick.de/forum](http://www.warwick.de/forum)

**Warwick**  
AMPLIFICATION





## Alfred Rides Expressway to Acoustic, Classic Rock

Alfred has teamed up with *Guitar World* magazine to introduce *Guitar World* instructional songbooks with the release of *Expressway To Acoustic Rock* and *Classic Rock* editions, each featuring 25 signature guitar-driven songs matched with step-by-step lessons.

The new *Guitar World Expressway* To series features easy-to-use tab arrangements and is designed to help intermediate and novice players learn popular guitar songs. Each song is accompanied by a detailed lesson focused on critical guitar parts by *Guitar World* Editor Jimmy Brown. The two included CDs contain full-length soundalike demonstration and play-along recordings. Additionally, the included TNT (Tone 'N' Tempo)

Changer software on the discs lets users slow the tracks down, loop sections, change keys, mute the guitar or even mute the vocals for singing practice. The method also contains various sections of additional information, such as tips on gear and effects settings and artist biographies.

*Expressway To Acoustic Rock* arrangements include "Babe I'm Gonna Leave You," "Better Together" and "Black Water."

*Expressway To Classic Rock* features "Another Brick in the Wall (Part 2)," "Brown Sugar," "Don't Stop Believin'," "Hotel California" and "Layla."

MSRP: \$24.99 each.

🛒 Alfred ([alfred.com](http://alfred.com))



## Yamaha Outfits FG Guitar With Pre-amp

Yamaha recently expanded its FG line of folk guitars with the introduction of the FGX700SC.

The FGX700SC is based on the FG700S solid-top acoustic guitar. It features an added cutaway and a one-way System 55T piezo/pre-amp system that includes a tuner, three-band EQ and an adjustable mid frequency slider.

"The FGX700SC acoustic guitar offers all the great features of the FG700S, with an added cutaway and pre-amp system," said Dennis Webster, marketing manager for Yamaha Guitars. "Available in high-gloss natural finish, it sounds great unplugged and through an amp or P.A. system."

MSRP: \$483.

🛒 Yamaha ([yamaha.com](http://yamaha.com))

## Cort Guitars Presents Sunset Series

Cort Guitars has introduced the Sunset series. The Sunset guitars are available in two models, Sunset 1 and Sunset 2. Both models have mahogany necks and bodies with maple tops, rosewood fingerboards, and TV Jones pickups. The guitars feature D'Addario strings and chrome hardware.

The Sunset 1 includes a Bigsby B50 tailpiece, maple top on chambered mahogany body, mahogany neck, rosewood

fretboard with 12-inch radius, and 22 frets and rectangular pearl inlay.

The Sunset 2 boasts a maple top on chambered mahogany body, mahogany neck, rectangular pearl inlay and die-cast tuners.

These guitars are available in black and candy-apple red. MSRP: Sunset 1, \$1,195; Sunset 2, \$750.

🛒 Cort Guitars ([cortguitars.com](http://cortguitars.com))

**Kahler**® USA Booth 5727

### Revolutionizes 6-7-8-9-10 String Trem/Fixed Bridge



☑ New multi string tremolo's & fixed (2 in 1) bridges by Kahler®  
For: 7, 8, 9 and 10 strings for flat and stud mounting guitars.

☑ New multi scale (fan fret) tremolo's & fixed (2 in 1) bridges by Kahler®  
For: 6, 7, 8, 9 and 10 strings for flat and stud mounting guitars

☑ Special sets of saddles and saddle extenders allow the Luthier to create and build the guitar as needed...  
The Kahler® system will accommodate a 20° - 30° + fret angle and string size from .008 - .100

☑ All Kahler® bridges are: cam powered...  
left & right handed configuration with arm position clutches.

☑ The Kahler® (2 in 1) features the cam in either tremolo action mode or locked down for a fixed bridge action.

☑ Equipped with fine tuning and six way adjustable saddle sets...  
to set custom spacing... action and intonation.

☑ Installation on flat or arch top guitars.

☑ For more information on all things Kahler®,  
go to: [www.kahlerusa.com](http://www.kahlerusa.com), [www.facebook.com/kahlerusa](https://www.facebook.com/kahlerusa),  
[www.youtube.com/kahlerusatrem](https://www.youtube.com/kahlerusatrem),  
[www.twitter.com/kahlerusa](https://www.twitter.com/kahlerusa) .  
See us at Booth #5727

## LP Jangles Jingle Qube

LP has created a jingle version of its Qube Shaker.

Inside the durable, easy-to-hold Jingle Qube is a combination of flat and dimpled brass jingles. This mix delivers a combination of crisp, articulate highs balanced with full-bodied, resonating mid-tones.

Like the Qube Shaker, the Jingle Qube



can be played a variety of ways to produce distinctive and captivating sounds. Front-to-back, side-to-side and circular patterns all produce distinctive sounds that add a unique, tambouric flair to any performance.

MSRP: \$55.99.

🛒 LP ([lpmusic.com](http://lpmusic.com))



## Save on Summer NAMM Housing

Receive a special rate at the Renaissance Nashville Hotel by making your Summer NAMM hotel reservations today.

The Renaissance Nashville serves as the show's headquarters. NAMM has opened up rooms at a special rate. Book today, and get your room for just \$174 — the discounted rate for NAMM members. After The NAMM Show, it will be \$184. Reservations can be made in the convention center lobby.

[NAMM \(namm.org\)](http://www.namm.org)

# Vox Revisits the 1960s With the New V846-HW Wah Wah

Vox has released the hand-wired V846-HW wah wah pedal, paying homage to the original wah wah pedal, first introduced by Vox in the 1960s.

The hand-wired turret board construction requires labor-intensive hand-wiring artistry that creates an efficient signal path. To complement the hand-wired turret board construction, every component, including the inductor, resistors, condenser and potentiometer, has been carefully selected for premium fidelity, tone and durability.

The pedal also boasts a die-cast body featuring a sandblasted exterior with crepe finish. The V846-HW uses a specially voiced



vintage-spec Halo-type inductor. The magnetic core material and winding ensure a reproduction of the original V846's wah

sound, sought after by guitarists everywhere. The potentiometer is a Vox original that features a distinctive response, and it's sealed for durability.

Carbon composite resistors are used for their low noise and uncolored sound. High-spec polyester film condensers are used. The high-quality footswitch made by Carling Technologies was selected for its reliability and feel underfoot.

The V846-HW provides a true-bypass circuit to preserve the guitar's tone going in and out of the pedal when not in use.

MSRP: \$329.

[Vox \(voxamps.com\)](http://www.voxamps.com)

## New Look for Kaces B&O Line

Designed for beginners, students and the school music market, Kaces is showing revamped versions of its Structure series poly-foam band and orchestra cases, which feature black-on-black material accents, reinforced zippers and new heavy-duty custom metal zipper pulls.



The cases are covered with a rugged 600D exterior and feature a high-density, lightweight foam construction and large pockets with interior organizers. The larger models come with bolted handles, shoulder straps and backpack straps. Models are available for trumpet, alto and tenor sax, flute, clarinet, trombone, and violin.

[Kaces \(kaces.com\)](http://www.kaces.com)

## UpBeat DAILY

Vol. 60 No. 4 | The NAMM Show | Sunday, January 22, 2012

**PRESIDENT**  
Kevin Maher

**PUBLISHER**  
Frank Alkyer

**EDITOR**  
Zach Phillips

**CONTRIBUTING EDITORS**  
Ed Enright, Katie Kailus,  
Bobby Reed, Jeff Cagle, Hilary Brown

**AD SALES MANAGER**  
John Cahill

**ACCOUNT EXECUTIVES**  
Tom Burns, Ritche Deraney

**ART DIRECTORS**  
Ara Tirado, Andy Williams

**CIRCULATION**  
Sue Mahal

**ACCOUNTING**  
Margaret Stevens

Address all correspondence to:  
UpBeat Daily

102 N. Haven Road, Elmhurst, IL 60126  
630-941-2030 | f: 630-941-3210  
editor@upbeatdaily.com

Maher Publications: DownBeat, Music Inc., UpBeat Daily. UpBeat Daily is the official NAMM show publication, published four times annually for The NAMM Show and three times annually for Summer NAMM. Music Inc., the business magazine for progressive music product retailers, is published 11 times annually.



# ★ ★ ★ MARKETPLACE ★ ★ ★

TruSound  
NO-BLEED HEARING PROTECTION  
Direct Sound EXTREME ISOLATION Headphones  
NAMM

Hall E • Booth # 1631

## What do your DREAMS SOUND like?

At Dream, our goal is simple:  
Make exceptional cymbals and gongs that musicians want to play.

You'll find *Bliss* in Metal & Jazz bands, *Contact* players in Hip Hop & Orchestras, *Energy* players in Rock & Country/Western, and *M-bao gongs* in Studios & Opera Pits.

Booth #3279  
info@dreamcymbals.com www.dreamcymbals.com

## HIGH GAIN AMPS

Mention this ad at our NAMM booth for 5% off your opening order and **FREE FREIGHT**

### MARGINS TO MATCH

1-239-877-7757 NAMM Booth 5824 www.velvetdistribution.com

7TH  
THE CAPO COMPANY  
THE NEWPORT CAPO  
LIGHT WEIGHT - LOW PROFILE

PERFORMANCE NEWPORT NASHVILLE  
WWW.G7TH.COM

## The right LOXX for your guitar

- Fast Assembly
- Quick, Easy Release
- Very Secure - over 220lbs pull-out force
- Top Quality Craftsmanship
- Rust Proof
- Mounting Tool included
- Wide Range of Designs and Finishes
- Made In Germany
- 3 Year Warranty

See us at Winter Namm 2012 1/19-1/22 Booth 4194 Hall C

LOXX  
Easy on. Easy off. Guitar Strap Locks

Exclusively Distributed By Floop Industries, Inc. 8282 Sunset Blvd. West Hollywood, Ca 90046 ph. 323.656.3882 fax. 323.656.0399 www.loxxusa.com info@loxxusa.com

## Git Doorbell

music for your door

Come visit the Gitdoorbell Booth 1617, Hall E to see it in action!

The Gitdoorbell™ is a fully functional 1/2 size acoustic guitar mounted over any inward opening doorway with a striker assembly that strums when you open the door!

Use Gitdoorbell™ for:  
Children's bedroom • Office • Retail business • Home Entry • Pub or any place you want a door announcement with style!

\$129.95 US Suggested Retail Price

For more information visit us at [Gitdoorbell.com](http://Gitdoorbell.com) • dave@guitarworkshoponline.com

Patent # 7399825 Other Patents Pending

## Your customers are waiting...

iConnectMIDI™  
Converged Music Interface

USB & DIN MIDI  
iPod touch®, iPhone®, iPad®  
Mac & PC

Discover how Eyal created the 'Move like Jagger' video:  
BOOTH: 1671  
HALL E  
Daily Draw: Signed iConnectMIDI™ by Jordan Rudess

iPad, iPhone, & iPod touch are trademarks of Apple Inc., registered in the U.S. and other countries.

## ukadelic

by KALA

www.KalaUkulele.com

get experienced  
BOOTH #1330



# ★ ★ ★ MARKETPLACE ★ ★ ★

Gig Bags  
Deluxe Bags  
Poly-Foam  
Plywood  
ABS Molded  
Fiberglass  
Carbon Fiber



**CROSSROCK™**  
case company

**FREE CASES!**

Hall E - Booth #1236

one case to ROCK them all...

**LOWREY**  
*Virtual Orchestra*  
Play What You Like  
Like What You Play



"We are making music for the first time ever. We love it!"

 [www.lowrey.com](http://www.lowrey.com)  
NAMM Booth 5311



**Up your levels.**

From recording to mastering, get online audio training from industry pros at [lynda.com/audio](http://lynda.com/audio).

lynda.com  
You can learn it.

Stop by booth 4711 (Hall C) and enter our iPad raffle.

**WANT A "CUSTOM" DOUBLE-NECK?**



CHOOSE FROM

- 3/4 JAZZ FOLK CLASSIC ELECTRIC 12 STRING 4 ST. BASS 5 ST. BASS FRETTED FRETLESS

ANY COMBINATION WILL WORK

**MAKE YOUR OWN - INSTANTLY!** **MINISTAR™**  
NAMM BOOTH E 1133 [www.ministarguitars.net](http://www.ministarguitars.net)

**REGAL RULES**

**THE REGAL TIP PROFIT CENTER**



Holds up to 72 pair of sticks, 24 brushes, and 24 brochures.

**REGAL TIP**  
[www.regaltip.com](http://www.regaltip.com)

**#1803**

Check out our Products at **Hall E #1803**



Rhythm Band Instruments

Visit us Online!  
[www.boomwhackers.com](http://www.boomwhackers.com) | [www.rhythmband.com](http://www.rhythmband.com)

**BOOMWHACKERS®**  
Find Boomwhackers on Facebook @ [facebook.com/boomwhackers](https://www.facebook.com/boomwhackers)

**BOOTH #1803**

NAMM BOOTH #4590

**Clayton PickTAC**  
New in 2012!



An easy, no mess solution for gripping any guitar pick.

[www.steveclayton.com](http://www.steveclayton.com)



**tc electronic®**  
**TC·HELICON®**  
dynaudio acoustics  
**TANNOY® NAMM®12**

**Hall B Booth # 5932**



# ★ ★ ★ MARKETPLACE ★ ★ ★

*Philippe Bosset*  
Paris  
*Acoustic guitar strings*

Namm Show  
Booth # 3483

[www.philippebosset.com](http://www.philippebosset.com)



**DAILY GUITAR GIVEAWAYS**  
VISIT US AT BOOTH 5266 HALL B

NEW! SPEEDSTER HOT ROD

TRAVELER GUITAR

TRAVELERGUITAR.COM



**PRO-LOK** THE SOLID SOLUTION  
Professional Racks, Cases, Stands, Cables, Reqs, Trussing, Staging & Towers

Hall B - BOOTH # 5765  
Dealer territories & distribution opportunities available  
USA. 305-934-4430 | INTL. 305-740-7454  
[www.prolok-usa.com](http://www.prolok-usa.com)



**Make Money Renting School Band & Orchestra Instruments**

Find out how at **Booth 3501**

**vir**  
[www.veritas-online.com](http://www.veritas-online.com)



What do your **DREAMS SOUND** like?

At Dream, our goal is simple:  
Make exceptional cymbals and gongs that musicians want to play.

You'll find *Bliss* in Metal & Jazz bands,  
*Contact* players in Hip Hop & Orchestras,  
*Energy* players in Rock & Country/Western,  
and *M-bao gongs* in Studios & Opera Pits.

Booth #3279

[info@dreamcymbals.com](mailto:info@dreamcymbals.com) [www.dreamcymbals.com](http://www.dreamcymbals.com)




**NEW PRODUCTS 2012!**

SOLO PERCUSSION SOLUTIONS

CYMBAL SHIELD  
Cymbal Cleaner Polish and Protectant

Check us out at NAMM Booth 2359

[SOLOPERCUSSIONSOLUTIONS.COM](http://SOLOPERCUSSIONSOLUTIONS.COM)

CYMBAL STUDS  
Removable Rivets for cymbal special EFX

Seeking Drum Shops, Sales Reps and Distributors for our growing line of Percussion Accessories.



Mojave Microphones ... from the mind of David Royer

**Mojave** audio

Visit us at Booth 6769



**ZerO Glide Nut System**  
Improves tuning stability, open string tone and playability

**JLD Bridge System**  
Increases soundboard vibration, tone, and prevents lifting bridges

**Ergo-Glide Top**  
Ergonomically shaped shoulder for increased picking arm comfort

**Wood Song**  
Advanced Acoustic Designs

WOODSONGGUITARS.COM 800-826-5482 goldtone1@aol.com

BOOTH 1504 (Hall E)





# Summer NAMM 2012

FEATURING

NAMM  
**Top 100**  
Dealer  
awards



**BUILD** your brand **SHOW** your products **REACH** your customers

July 12-14 2012  
Nashville  
Tennessee  
NASHVILLE CONVENTION CENTER

Summer <sup>12</sup> | Take it  
NAMM® to the Top





# ★ ★ ★ ★ CLASSIFIEDS ★ ★ ★ ★

## TASCAM® TEAC PROFESSIONAL INSIDE SALES REPRESENTATIVE MONTEBELLO BASED

Working with the Vice President, Regional Sales Managers and other TASCAM Team Members, your main focus will be developing both new business and building sales in the existing lower-level dealer base. You will also support TASCAM in all aspects of Sales and Marketing.

We are looking for individuals that are music and gear literate, preferably with hands-on knowledge of TASCAM and competitor products. Sales experience with emphasis on phone sales is helpful. Proficiency in both PC and MAC environments along with solid knowledge of Excel is required. Computer recording experience coupled with familiarity of recording software is preferable. Ability to travel an average of 2-3 days per month and mandatory attendance at TASCAM trade shows required.

In addition to full-time employment we offer a generous benefits package. If you're ready to work for one of the most recognized brands in the recording industry please send your resume and salary history to:

Ms. Tanja M. Pino, HR Manager

E-Mail: [tpino@teac.com](mailto:tpino@teac.com)

FAX: (323)869-8732

Stop by our NAMM Booth #6491 and speak to Tanja in person

Visit our Website at: [www.tascam.com](http://www.tascam.com)

## HARMAN CROWN

### PROGRAM MANAGER — PROFESSIONAL AUDIO ELKHART, IN

Crown by Harman, the industry leading designer and manufacturer of power amplifiers, audio networking, and control software, is seeking an exceptional candidate for the position of Program Manager. Reporting to the Director – Engineering, this position will be responsible for planning, implementation, control and completion of key new product development projects.

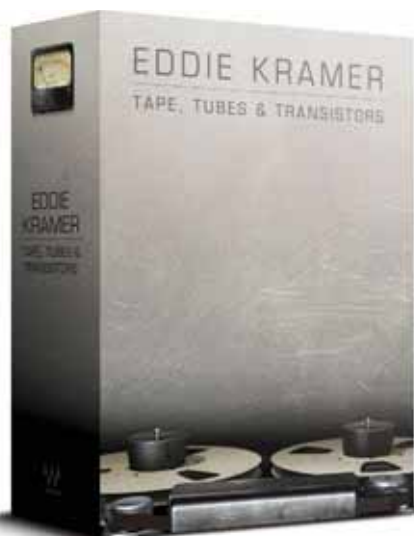
The successful candidate will have a Bachelor's degree in Engineering and at least 5 years experience. PMP certification, MBA or other advanced training desirable. Previous experience in Pro Audio, Amplifiers, Networks or DSP is highly desired.

Occasional domestic and international travel is required.

The candidate should be highly motivated, passionate, and driven to excel. If you're looking for a rigorous challenge while working with the best brand in the industry, this is the position for you.

Key responsibilities include: Managing 2-4 new product development programs from inception to production start, and coordinating the work of a cross functional project team including design, marketing, operations, finance, and sourcing. This position also requires the proven ability to communicate with all levels in the company in all departments, resolving conflicts when they occur and elevating them when needed.

Crown offers competitive salary, benefits, and growth opportunities. For consideration please submit resume and cover letter to [Brenda.Beckwith@Harman.com](mailto:Brenda.Beckwith@Harman.com) or visit [jobs.harman.com](http://jobs.harman.com) (ENG257)



## Waves & Eddie Kramer Team Up

Waves has launched Tape, Tubes & Transistors, a bundle of plug-ins recreating the audio chain of producer/engineer Eddie Kramer.

Tape, Tubes & Transistors features three meticulously modeled vintage plug-ins: Kramer Master Tape, HLS Channel and PIE Compressor. All three have been developed in association with Kramer as part of an ongoing series of collaborations. Together, they recreate Kramer's golden audio chain, which he used to record musical icons, such as Jimi Hendrix, Led Zeppelin and Kiss.

Over the course of a production and engineering career that has spanned more than four decades, Eddie Kramer was the man behind the board for the biggest names in music history.

In modeling the Helios console channel, the Pye compressor and the rare vintage quarter-inch reel-to-reel machine, Waves has recreated three essential elements of the recording chain at Olympic Studios, where Kramer participated in so many historic recordings.

🛒 [Waves \(waves.com\)](http://Waves.com)

## LINE 6

### Sales Leadership – Live Sound Commercial Channels

Want to Work for a Company That Innovates? One That Bases its Business on Integrity, Drive, Excellence and Respect?

Line 6, one of the leading music products companies in the industry, is on the lookout for a dynamic, resourceful, results-driven sales leader to drive and direct sales within the live sound commercial channels in both the U.S. and Europe.

Successful candidates will have extensive senior sales leadership experience within the pro-audio market and a technical background in live sound products.

For immediate consideration, please e-mail your resume to [drupet@line6.com](mailto:drupet@line6.com) or to learn more, please visit [www.line6.com](http://www.line6.com).

Line 6 is an equal opportunity employer.

## Genz Benz Shows Second Generation of Shuttle Amps

Genz Benz recently introduced the new Shuttle 6.2 series and Shuttle 9.2, the second generation of the Shuttle series of light-weight, high-output bass amplifiers.

The new Shuttle 6.2 series and Shuttle 9.2 feature enhanced performance and versatility with increased tube gain and the addition of proprietary 3-Dimensional Power Management analog technology. This adds heft and girth to each individual note, enhancing the amplifier's responsiveness and headroom, and maintains dynamics while delivering a three-dimensional feel. The result for the Shuttle 6.2 series is a 600-watt high-powered tour-class bass guitar amplifier that outperforms its 3.75-pound size and a 900-watt high-powered tour-class bass amplifier for the Shuttle 9.2.

The 12AX7 tube pre-amp in each of the Shuttle 6.2 series and Shuttle 9.2 offers additional gain for added overdrive versatility, an active EQ section with a parametric mid-range network, and Genz Benz's global signal shaping circuitry.

In addition to the amplifier enhancements, the new Shuttle 6.2-12T and Shuttle 6.2-210T combos now feature newly designed proprietary high-output neodymium cast-frame speakers, which deliver increased output and thicker, responsive tone. These

performance enhancements and the new look of the Shuttle 6.2 series hold true to the



style of the original Shuttle models.

The power section of the Shuttle 9.2 features Proprietary Heat Abatement Technology that keeps the amplifier running cool under long-term power demands.

MSRP: \$899-\$1,799.

🛒 [Genz Benz \(genzbenz.com\)](http://GenzBenz.com)



### SENIOR MANAGER, PORTABLE PA MARKETING NORTHRIDGE, CA

JBL Professional has an immediate opening for a Senior Marketing Manager to lead product development and marketing efforts for the Portable PA segment of its business.

The successful candidate will have a Bachelor's degree and at least 5 years experience in marketing, marketing communications and product development. MBA or other advanced training desirable. Previous experience in the Pro Audio and MI business is required.

The position is based in Northridge, California with occasional travel required. The candidate should be highly motivated, passionate, and driven to excel.

For consideration please apply at [www.harman.com/Careers](http://www.harman.com/Careers)



## Crown Audio Displays Input Processor Card for CTs Series

Crown Audio is showcasing its PIP-BLU Programmable Input Processor (PIP) card for the Crown CTs series power amplifiers. The PIP-BLU adds BSS Audio Soundweb London digital audio bus functionality to Crown CTs series amplifiers, offering a simple, cost-effective way to get digital audio to amplifiers.

The card is compatible with Crown CTs series two-channel amps built after April 2011.

🛒 [Crown Audio \(crownaudio.com\)](http://CrownAudio.com)



# THE NEW WARWICK ROCKBASS, PRO SERIES & ARTIST SERIES

## ROCKBASS CHINA



CORVETTE BASIC SHORT SCALE, 4 STRING  
BLACK HP, NATURAL SATIN

CORVETTE BASIC MEDIUM SCALE, 4 STRING  
BLACK HP, NATURAL SATIN

CORVETTE BASIC, 6 STRING  
BLACK HP, NATURAL SATIN

STREAMER LX, 4 / 5 STRING  
BLACK HP, METALLIC RED, METALLIC BLUE HP

STREAMER NT I, 4 / 5 STRING  
BLACK HP, HONEY VIOLET, NATURAL HP

## ARTIST LINE CHINA



ROBERT TRIJILLO ARTIST LINE,  
4 / 5 STRING  
BLACK SATIN FINISH SOLID

## PRO SERIES KOREA



STREAMER STAGE I, 4 / 5 STRING  
BLACK HP, HONEY SUNBURST STAIN HP,  
NATURAL HP

**21 NEW MODELS**  
**CAN YOU**  
**AFFORD**  
**NOT TO,**  
**HAVE THEM?**

## ARTIST SERIES KOREA



JACK BRUCE ARTIST SERIES, 4 STRING  
BANDONIERI RED SATIN HP, NIMROD BLACK SATIN HP



ROBERT TRIJILLO ARTIST SERIES, 4 / 5 STRING  
OCEAN BLUE OFC



STEVE BAILEY ARTIST SERIES, 4 / 5 STRING  
BLACK HP



the **NAMM**  
**show**

Visit us on Hall C # 4576

Family owned • Solar powered • Sustainably manufactured in a green environment

Distribution USA: 16000 E. Grand Ave., Suite 100, Denver, CO 80232 • Phone: 303.557.7900 • Fax: 303.557.7901 • Email: sales@warwickbass.com  
Distribution Canada: 1000 Steeles Ave. E., Suite 100, Scarborough, ON M1V 5K7 • Phone: 416.291.1111 • Fax: 416.291.1112 • Email: sales@warwickbass.com  
Artist Contact: 16000 E. Grand Ave., Suite 100, Denver, CO 80232 • Phone: 303.557.7900 • Fax: 303.557.7901 • Email: sales@warwickbass.com  
Headquarters: 16000 E. Grand Ave., Suite 100, Denver, CO 80232 • Phone: 303.557.7900 • Fax: 303.557.7901 • Email: sales@warwickbass.com  
Branches: 16000 E. Grand Ave., Suite 100, Denver, CO 80232 • Phone: 303.557.7900 • Fax: 303.557.7901 • Email: sales@warwickbass.com  
Visit us on the World Wide Web: [www.warwickbass.com](http://www.warwickbass.com) • join the WARWICK BASS FORUM: [www.warwick.de/forum](http://www.warwick.de/forum)



**warwick**  
Basses, Amps & Rock'n Roll.







# Thank you



To each & every **NAMM member** and to the dedicated **board & staff** of the **NAMM Foundation**, from all of us at **Guitars in the Classroom** for helping to bring music to learning from “sea to shining sea” in 2011!

*Your vision, effort and generosity are changing lives 365 days of the year*



**2012 RPMDA Convention**

**May 2-5  
Los Angeles, CA**

**There's no business  
like your business!**

**www.printmusic.org**

## Chauvet Lets Freedom Ring

Chauvet has released two wireless fixtures to liberate mobile entertainers from the hassle of tangled power cords and DMX cables. Freedom Par (pictured) and Freedom Strip Mini combine RGB wash lights with eight hours of battery power, D-Fi 2.4-GHz wireless DMX and infrared remote control (IRC) capability for complete wireless control to save time running cables and money on power supply.

Freedom Par and Freedom Strip Mini include a lightweight and rechargeable lithium-ion battery that provides up to eight hours of power and D-Fi 2.4 GHz that acts as a transmitter or receiver to run wireless DMX at any event. Optional control is also available using the IRC remote for easy,



point-and-shoot operation.

Built-in automatic and sound-activated programs can be triggered using DMX control or an IRC remote.

🛒 **Chauvet Lighting (chauvetlighting.com)**

## Fuchs Audio Comes Up Aces

Fuchs Audio Technology has completed its “casino series” of guitar amps with the introduction of the 4-Aces and Full-House-50 heads and combos.

The series includes models that range from 4 to 50 watts. Based on the Blackjack-MK-II circuit, the 4-Aces is built to be a home and studio recording amp.

Featuring a power stage using two 6SN7 octal pre-amp tubes, it produces 4 watts

push/pull into 4, 8 and 16 ohms. The Full House-50 features two 6L6s for 50 watts. Like their siblings, the Blackjack-MK-II and Lucky7-MK-II, the amps feature aluminum chassis, a back-lit logo, a 24-bit digital reverb with decay and level control, a set of effect loop patch jacks, an overdrive volume and tone control, and separate gain controls.

🛒 **Fuchs Audio (fuchsaudio.com)**

## 65Amps Says Meet ‘The Producer’

65Amps is displaying The Producer at NAMM. The 28-watt amplifier has a tube circuit that addresses the characteristics of modern tubes in a new way. 65amps has created The Producer as a solution to coaxing consistent and reliable classic tube warmth from modern tubes.

The amp runs a pair of EL34s in a safe and unconventional way. With help from Mercury Magnetics, 65amps developed a transformer and circuitry that lets EL34s produce strong tone and long-lasting tubes, sometimes over a decade, according to company officials.



The approach delivers both classic distortion and clean tones.

🛒 **65Amps (65amps.com)**



## Composite Acoustics Adds OX Series to Lineup

Composite Acoustics has introduced the OX series acoustic guitar. The latest addition to the Composite Acoustics family of instruments, the OX has warm, organic tone; defined low end; and strong presence and volume. The OX features a 20-fret cutaway body with a proprietary heelless neck joint,

soft body contours, and patented one-piece neck and body construction. An enhanced proprietary neck angle and fretboard material give the OX comfort and playability, while its graphite composite reinforced neck and body deliver tone and consistency.

🛒 **Composite Acoustics (caguitars.com)**



FOR PROGRESSIVE MUSIC RETAILERS

# music inc<sup>®</sup>

IDEAS DELIVERED—YOUR WAY!

Music Inc. Magazine



Digital Music Inc.

MusicIncMag.com



Music Inc. e-Headlines

Music Inc. Magazine

Digital Music Inc.

MusicIncMag.com

Music Inc. e-Headlines

In this day and age, we at Music Inc. understand that everyone wants their news and ideas delivered in different ways. That's why we give you the best reporting on music retailing in very personal ways—our print magazine, digital magazine, web site and e-Headlines. We deliver Music Inc. your way.

For more information or to get your subscription to Music Inc. magazine, just go to [musicincmag.com](http://musicincmag.com). IT'S FREE for qualified members of the music products industry.





**Percussion Marketing Council**

**Get Involved with PMC and  
Make a Difference in  
Growing the Percussion Industry**

The PMC has been the catalyst for much of the percussion industry's expansion. The organization's activities and programs are focused on creating even more growth by focusing on promoting drumming to new players and bringing new customers into your stores, rather than merely selling more drums to existing customers.

Visit the PMC Kiosk at the NAMM Foundation booth to see how you as a manufacturer, distributor or retailer can make a difference.

**Percussion Marketing Council • www.playdrums.com  
Tel: 440.582.7006 • KBDUSTMAN@aol.com**




## Behringer Releases XD Series Kits

Behringer recently debuted its XD series drum kits, including the XD60-LE, XD60-USB, XD70-USB and XD80-USB. This series offers four electronic kit options that are as easy to play as they are to transport and set up.

Behringer designed the XD series to feature true-to life feel, ideal for drummers who use electronic drums for practice and then return to an acoustic kit for

live performance. The pads feature a natural rubber surface, which mimics the feel of real skins and minimizes false triggering. All kits feature sturdy extruded aluminum frames, which provide a solid foundation for the drum and cymbal pads. Packed with vast libraries of top-notch studio and live drum, percussion and cymbal sounds, XD series drums sound realistic and clean.

🛒 **Behringer (behringer.com)**

## Tascam Updates HS-P82 Firmware

Tascam has issued firmware version V1.10 to its HS-P82 eight-track pro field recorder. The firmware update includes three new functions to make this user-friendly unit even more intuitive. A mirror recording function has been added to firmware version V1.10, which allows simultaneous recording to two CF cards.

Previously, slate mic signal or the slate

tone signal was only assigned to the armed tracks while pressing down the slate key located on the front panel. Now with the update, the slate function can be left on, simply by holding down the shift key while pressing the slate key. Take end time code (END T/C) has been added to the take information pop-up display.

🛒 **Tascam (tascam.com)**

## Toca Goes Back to Its Roots

Toca has released its Origins series of wood djembes.

Origin series drum shells are carved from a single piece of environmentally friendly, plantation-grown mahogany and are lathe-turned to maintain uniform thickness.

The interior of the bowl of the drums features lathed grooves and a rough-surfaced pattern that virtually eliminates overtones. The drums' bearing edges are hand-carved to precise specifications.

The Origin series djembes have natural goatskin heads.

There are four sizes of Origin series



djembes: 12- by 7-inch, 16- by 8-inch, 20- by 10-inch and 24- by 12-inch.

🛒 **Toca (tocapercussion.com)**

## On Point Audio Premieres OPA28 NP Speaker

On Point Audio has unveiled the OPA28 NP.

Company executives called the high-output OPA28 NP dual 8-inch coaxial speaker system the world's smallest dual 8-inch, full-range speaker system, at 18.4 inches high, 7.3 inches wide and 8.1 inches deep.

Its size is made possible by On Point's Narrow-Profile 8-inch drivers, which are only 6.8 inches in diameter.



The system also employs a coaxially mounted 1.35-inch pure titanium compression driver.

The OPA28 NP delivers 127 dB maximum output due to its 400-watt continuous, 1,600-watt peak power handling. Its acoustic output-to-size ratio is one of the highest in the professional audio industry.

🛒 **On Point Audio (onpointaudio.com)**

**pianonet.com**

## The Piano Business Does Have its Benefits



## Join the Piano Manufacturers Association International today!

The benefits of joining PMAI are numerous...

- Shipment statistics
- Major market statistics
- Participation in national marketing outreach
- Retailer & Manufacturer Code of Ethics
- A presence on www.pianonet.com
- Piano retailer programs
- Recreational Music Making programs
- Networking with other members

To learn more about the benefits of joining PMAI please contact us.

972-233-9107 ext 204 • office@pianonet.com • www.pianonet.com

Membership in the Piano Manufacturers Association International is open to manufacturers of piano products.



# We proudly present



## Mr. Jack Bruce & Mr. Jimmy Earl



Jimmy Earl Signature

Jack Bruce Signature

### with their new signature models

seen on Hall C # 4576

the **NAMM**  
show®



**Warwick**  
Basses, Amps & Rock'n Roll.



Family owned • Solar powered • Sustainably manufactured in a green environment  
 Distribution Usa: 18 Main St. • 414 East Center St. • Myrtle Beach, SC 29577 • Phone: 803 377 1000 • Fax: 803 369 4444 • Email: [usa@warwickbass.com](mailto:usa@warwickbass.com)  
 Distribution Canada: 1000 Ste. Catherine St. • Montreal, QC H3B 2K6 • Phone: 514 487 2000 • Fax: 514 487 2000 • Web: [www.warwickbass.com](http://www.warwickbass.com)  
 Artist Contact: Warwick Music Equipment Distributors (WME) Inc. • 7500 East 7th Street • New York, NY 10022 • Phone: 212 777 6900 • Fax: 212 777 6900 • Email: [usa@warwickbass.com](mailto:usa@warwickbass.com)  
 Headquarters: Warwick • Grefenstrichstr. • Eggenstein • 76308 • Neckarsteinbach • Germany • Phone: +49 7141 9000 • Fax: +49 7141 9001 • Email: [info@warwick.de](mailto:info@warwick.de)  
 Branches: Georgia • Florida • Colorado • Tennessee • Texas • California • Illinois • Michigan • Minnesota • New Jersey • New York • Pennsylvania • Rhode Island • South Carolina • Virginia • Washington • Wisconsin • Wyoming  
 Visit us on the World Wide Web: [www.warwickbass.com](http://www.warwickbass.com) • Join the WARWICK BASS FORUM: [www.warwick.de/forum](http://www.warwick.de/forum)



# (((★ REALWORLD ★)))



Global Productions' Adrian Gallegos (left) with American Audio Visual's Michael Horn

## Paz Approves of D.A.S.

Latin artist Espinosa Paz relies on his D.A.S. Audio Aero Series 2 loudspeaker systems for a wide range of performance venues. San Antonio, Texas-based Global Productions handles Paz's staging considerations.

"Our loudspeaker setups vary quite a bit," said Adrian Gallegos, co-owner of Global Productions and the tour's production manager. "Depending on the nature of the venue. We go from arenas to theaters to nightclubs, so I have to be able to handle a wide range of performance spaces. Currently, we have 24 D.A.S. Audio Aero 12A powered line array elements that we frequently fly 12 units per side."

## Yamaha's New Roster

Yamaha has expanded its roster with the signing of several artists, including trombonists Reggie Young and David Finlayson, violinist David Ragsdale, and crossover classical music sensation 2Cellos.

"These remarkable musicians enrich our celebrated artist roster," said John Wittmann, director of artist relations for Yamaha Corp. of America. "They each bring a unique talent and fresh perspective to the music scene and attract a widely diverse audience. We look forward to helping each of them build on their unique contributions through their association with Yamaha."

## Allen & Heath Conducts Certification

Allen & Heath recently conducted an iLive User certification, a four-hour, hands-on mixing class centered around the iLive digital mixing system. Aimed at operators, production companies and integrators, this clinic is the first in a series of certification levels for iLive users and prospective clients.

"We have received an overwhelming response to these hands-on mixing clinics," said Michael Palmer, sales manager for Allen & Heath. "The opportunity to be able to sit users down at the system and go through the nuts and bolt of this amazingly flexible system is priceless."

## API Console Installed in Paris Recording Studio

One of API's 1608 analog consoles was recently installed in Paris recording facility Studio K. Owned and operated by French musician, composer, engineer and producer David Chalmin, Studio K resides in the center of Paris and offers recording and mixing services to artists from all genres.

"When I decided to invest in a new console, I knew right away that I wanted something with a distinctive sound," Chalmin said. "I was going to invest a lot of money, and I didn't want my console

to have a transparent mixer. I can reach transparency in the digital world. I wanted analog. When you think of analog, you think of color — and when you think of color, you think API."

## Cort Gives Sinise Bass

Cort recently presented actor and musician Gary Sinise with a Cort Artisan A4 bass in appreciation of the work he does to help support veterans of the U.S. military and other charitable efforts through his Gary Sinise Foundation.

The presentation occurred during a fundraising event in Chicago, where Sinise's Lt. Dan Band performed.

The fundraiser benefited the U.S. Veterans Arts Program, which strives to provide artistic tools to wounded service members of the Iraq and Afghanistan wars, as well as Veterans Medical Service Organizations.

## Mason Teams With Mapex

Mapex Drums and Majestic Percussion have added Dr. Brian Mason to their artist and education roster. Mason is currently the associate professor of percussion at Morehead State University in Morehead, Ky.



Dr. Brian Mason

He's a respected innovator of the contemporary marching percussion ensemble. As a clinician, designer and adjudicator, Mason has traveled extensively throughout the United States, Japan, Canada, Korea and Mexico.

"Mapex is the hottest percussion brand on the market today," Mason said. "Since day one, I've felt right at home with the Mapex/Majestic family. Whether I am teaching in my studio at Morehead State University or on stage performing, I know that the music I am expressing is going to be enhanced by the quality of the Mapex and Majestic instruments."

## Sucherman Shows His Drumming Chops

Chops Percussion hosted Todd Sucherman for an informative clinic at Paige's Music in Indianapolis on Nov. 8, 2011. An estimated 120 people were on hand to watch Sucherman, who played a seven-piece Pearl MCX Mocha Tamo kit complete with Pearl hardware and a Reference series snare drum. He performed various tracks and conducted a Q&A session.

## Fleet Foxes Chooses Royer

Folk-rock band Fleet Foxes has incorporated two Royer Labs R-121 ribbon microphones into its setup.

"I particularly like using them to mic guitar amps because they exhibit a very clean, flat sound with a depth of field that sits beautifully in the mix," said Jared Hankins, audio engineer for Fleet Foxes. "When miking the guitar, there's no excessive build up in the low end, and the ability of the R-121 to withstand high SPLs is a unique benefit."



## Gemini DRM-1 Turns Racks Into Recorders

Gemini recently rolled out the DRM-1 rackmount digital recorder. Occupying a single unit of rackspace, Gemini's DRM-1 gives users the power to record and play back from one stand-alone unit.

The DRM-1 features a USB port and SD card slot, allowing direct recording to a thumb drive or memory card in a variety of MP3 formats or in WAV at 44.1 kHz, 16 bit. Plus, navigating through files and folders is easy thanks to the unit's jog wheel and large, full-color LCD display.

To ensure total connecting convenience, the DRM-1 has a host of inputs and outputs for hooking up microphones, keyboards

and other electronic instruments. It can also be connected to a mixer for capturing true soundboard audio when recording a full band.

"The DRM-1 offers ease of use and accurate, pro-grade recording," said Alan Cabasso, president of Gemini. "Its compact, low-profile design makes it ideal for DJs and musicians, or it can be installed in bars, clubs, schools and houses of worship. It's also great for front-of-house applications, even as a backup recorder for the most sophisticated FOH setups."

MSRP: \$319.95.

Gemini ([geminisound.com](http://geminisound.com))

## Buffet Crampon Group Becomes Buffet Group

In a move to strengthen brand identity and strategic vision, Buffet Crampon Group has become Buffet Group with a mission of being the "global reference in wind instruments."

Based in Mantes-la-Ville, France, Buffet made the change to bring together its five brands and 10 subsidiaries behind a single vision, according to company officials. Those brands include Buffet Crampon, Besson,

Antoine Courtois, Julius Keilwerth and W. Schreiber.

Buffet Group's five production sites are based in France and Germany, making instruments exported around the world.

Exports account for 94 percent of Buffet Group's revenue, with Asia representing more than 40 percent of total group revenue.

Buffet Group ([buffet-group.com](http://buffet-group.com))



## Fender Custom Shop Crafts 10 for 2012

Fender's Custom Shop has added 10 exotic models to its 2012 limited collection.

The Custom Shop honors the Nocaster with the release of the 1951 New Old Stock Nocaster and the 1951 Relic Nocaster. Both models feature a hand-selected ash body with a Nocaster Blonde finish and include all-new Twisted Tele pickups designed by Fender's Master Builders.

The 1956 Heavy Relic Stratocaster emits a genuine worn-out Fender Strat vibe and is built for tone, playability and classic looks.

The Custom Shop pays homage to the 1960s with the 1960 Relic Stratocaster. Features include a hand-selected premium alder body, maple neck with large C shape and matching headstock, and rosewood fingerboard with 9.5-inch radius and 6105 frets.

Honoring the early '60s Custom Telecaster is the 1961 Relic Custom Telecaster, featuring a double-bound, hand-selected lightweight ash body; maple neck with an early '60s C shape; and rosewood fingerboard with 9.5-inch radius and 6105 frets.

The 2012 Closet Classic Stratocaster Pro has a hand-selected swamp ash body and a

distinctive Closet Classic lacquer finish that imparts the look of a long-lost but newly rediscovered instrument. Features include an access heel for easy access to upper frets, quartersawn maple neck with early '60s C shape, and round-laminated 22-fret maple or rosewood fingerboard with 9.5-inch radius and 6105 frets.

The 2012 Closet Classic Telecaster Pro sports a body fashioned from swamp ash with a Closet Classic lacquer finish.

The 2012 Custom Deluxe Stratocaster and 2012 Custom Deluxe Telecaster are deluxe models with refined, custom features and an exotic wood selection. Both feature a hand-selected lightweight ash body with access heel and AAA quilted maple veneer top.

The 1961 Closet Classic Jazz Bass features an alder body, quartersawn maple neck with a '60s U shape, rosewood fingerboard with 7.25-inch radius and vintage frets, vintage-style Jazz Bass pickups, stacked concentric control knobs, tortoiseshell pickguard and vintage hardware. It's available in black and Arctic White.

Fender ([fendercustomshop.com](http://fendercustomshop.com))



# DOWNBEAT

Jazz, Blues & Beyond

SINCE 1934

## Jazz Delivered—Your Way!

DownBeat Magazine



DownBeat.com



Digital DownBeat

DownBeat e-Headlines

- DownBeat Magazine
- Digital DownBeat
- DownBeat.com
- DownBeat e-Headlines

At DownBeat, we know that everyone wants their jazz, blues and improvised music news, reviews and features delivered in different ways. That's why we give you the best reporting on music in very personal ways—our print magazine, digital magazine, web site and e-Headlines. We deliver DownBeat the way our readers want it.

For more information or to get your subscription to DownBeat, just go to [DownBeat.com](http://DownBeat.com).



the  
**NAMM**<sup>®</sup>  
show<sup>12</sup>  
January 19-22  
2012 Anaheim, California  
*Make it Count.*

Featuring the 2012 TEC Awards!

## This Morning's NAMM U Breakfast Session:

### Best in Show: This Year's Hottest Products

**FREE Breakfast (First Come, First Served): 8 a.m.–8:30 a.m.**  
**Main Session: 8:30 a.m.–9:30 a.m.**  
**Pacific Ballrooms, Hilton Anaheim Hotel**

With more than 1,500 exhibitors filling the Anaheim Convention Center, how do you see it all? Join Frank Alkyer and his panel of well-respected buyers who've searched every aisle for the best products, ideas and trends, and selected their top finds in four categories: Best Add-On or Accessory, Gotta Stock It, Companies to Watch and Best in Show. **Don't miss this 60-minute summary of what to see before you go home.**

## Today's Highlights from the NAMM Foundation Learning Lounge

Located in the California Ballroom of the Anaheim Hilton

**9:30 a.m. The Music Education Days Breakfast Featuring the World-Renowned Canadian Brass Quintet**  
**10:30 a.m. Session by Dr. Tim Lautzenheiser**  
**11:30 a.m. Live Interview with Legendary Composer Sammy Nestico**

## Strum for Fun at the Wanna Play Uke Circle

Wrap up the NAMM Show with a uke and a smile at our second annual Uke Circle, **today between 3:30 p.m. and 5 p.m. in the Arena Plaza.** Ukuleles are provided by Kala Brand Music. Just bring yourself and your island spirit!

## Relive the NAMM Show Online

If you missed anything at the show or want to share your experience with staff, family and friends back home, **check out our daily coverage online**—featuring pictures, live streaming video, daily recaps and more! Log on to [www.namm.org/thenammshow](http://www.namm.org/thenammshow) to view the many memorable highlights from the past four days.

## Your Last Chance to See It All!

You'll find all of the show news, updates and schedules online at [www.namm.org](http://www.namm.org). And with time running out, **don't forget to visit Hall E and Levels 2 and 3**—where you'll discover some of the show's best finds!

## Take It to the Top at Summer NAMM

Get ready to "gear up" for the holiday season as we return to Nashville for **Summer NAMM, July 12–14, 2012.** Join us for the **Top 100 Dealer Awards Program**, honoring the best ideas and leading dealers, and the **Wanna Play Saturday Public Day**, continuing the industry's work to introduce more people to the benefits and fun of playing music. Look for updates on [www.namm.org](http://www.namm.org).

Summer <sup>12</sup>  
**NAMM** | Take it  
to the Top

90,000+  
Registrants

1,400+  
Exhibiting Companies

90+  
Countries Represented

4  
Days

**NAMM**® 5790 Armada Drive • Carlsbad, CA 92008 • 760.438.8001 • [www.namm.org](http://www.namm.org)

(((★ SCHEDULE ★)))

Unless otherwise noted, scheduled events can be found at the NAMM Idea Center, Booth #5501



Gayle Beacock of Beacock Music discusses her favorite small good during "Best in Show"

## SUNDAY, JAN. 22

### BREAKFAST SESSION

8 A.M.

#### Best in Show — This Year's Hottest Products

Moderator: Frank Alkyer, *Music Inc.* Publisher

Hilton Anaheim Hotel, Pacific Ballrooms  
*Music Inc.* Publisher Frank Alkyer hosts a panel of retailers and buyers who scoured the show floor and came up with the best products, ideas and trends. (Free breakfast served 8–8:30 a.m.)

10:30 A.M.

#### Create Your Own Woodstock — In Your Store

Gamber explains how to integrate your print music program, social media, and store's heart and soul to thrive. Learn how to create your own Woodstock and make a home for the next generation of music lesson competition.

11 A.M.

#### Meet the Press: How to Prepare for Your Interview

NAMM's Scott Robertson and Jo-Ann Gefen discuss how to speak to the press when promoting an event, discussing music education or talking about what's new at your store. Learn simple tips and strategies to turn your words into news and get great coverage,

which is the same as getting free advertising in print, online or on the air.

Noon (Double Session)

#### Creating New Customers and Musicians With Ukulele Circles

This session gives dealers all the information they need to create a successful uke circle at little or no cost. The panel includes dealers who have had successful uke circles and experienced ukulele circle leader Jim D'Ville.

1 P.M. (Double Session)

#### The Music Instinct: Science and Song (Part 1)

Come follow researcher Daniel Levitin and musician Bobby McFerrin to the crossroads of science and culture in search of answers to music's deep mysteries.

2 P.M. (Double Session)

#### 2012 Best Tools for Schools Awards

Symphony Publishing editors and guests host the announcement of winning products in the annual Best Tools for Schools Awards.

3 P.M. (Double Session)

#### The Music Instinct: Science and Song (Part 2)

Levitin and McFerrin continue their journey into the connection between music and the human brain.

## Gretsch Renown57 Now in Motor City Red

Gretsch has added Motor City Red to the vibrant color offerings of the Renown57 drum set. It's now available in addition to the Motor City Black and Motor City Blue Renown57 color choices.

Motor City Red features a candy apple red lacquer with small metallic flakes. To give added color distinction, the chevron color is painted a cream hue. The two-toned red/cream colors project a custom, hot-rod vibe.

Inspired by the great American car



companies from the 1950s, the Renown57 incorporates car-design elements into each drum. The hood ornament is the Chevron, an aluminum triangular teardrop painted cream with raised beveled chrome edges and embossed chrome

Gretsch logo. Each drum has its own sized chevron, scaled to fit that specific drum size. For a limited time, this kit includes a free matching Motor City Red throne from Gibraltar. MSRP: \$3,010.

🛒 **Gretsch** ([gretschdrums.com](http://gretschdrums.com))



# ULTIMATE KONTROL



Mix anything.  
Tweak everything.

**4TRAK**  
4-CHANNEL TRAKTOR CONTROLLER

**TRAKTOR**



NUMARK.COM

- Four decks of software control with included TRAKTOR 2 4TRAK Edition software
- 12-knob FX KOMMAND CONSOLE for complete control over effects & filters
- Built-in four-channel DJ mixer that works with or without a computer
- Four line inputs, two turntable inputs and two microphone inputs
- Touch-sensitive illuminated platters with 3600 ticks of resolution per rotation
- Built-in 24-bit audio interface with balanced XLR outputs
- Solid metal construction
- Maps seamlessly with TRAKTOR PRO 2 including sample triggers

**Numark** Visit us at booth #6400





Thank you for a great show.



**SAMSON**